

Technical Manual

911 Carrera (996)

Repair

Group 7

Body equipment, interior

Supplement Overview

Supplement	Edition	Topic	Article number
	05/1997	Basic edition	WKD483721
5	12/1997	Overview of repair groups	WKD483721.05
6	11/1997	Cowl panel cover	WKD483721.06
7	07/1998	Cabriolet roof lining	WKD483721.07
8	03/1998	General supplement	WKD483721.08
9	05/1998	Folder separation of Volume 5/6	WKD483721.09
11	05/1998	Tightening torque for cabriolet roof lining	WKD483721.11
18	11/1998	Coupe roof lining	WKD483721.18
21	01/1999	Removing and installing door trim panel	WKD483721.21
22	02/1999	Folder separation of Volume 6/7	WKD483721.22
23	02/1999	Delivery of the title pages	WKD483721.23
25	03/21999	GT3 bucket seat	WKD483721.25
34	10/1999	Replacing deformation element in the A, B and C pillar trim elements	WKD483721.34
38	12/1999	Note on disassembling and assembling the dashboard	WKD483721.38
44	11/2000	General supplement	WKD483721.44

Table of Contents

1 Foreword

Foreword

Foreword	-1	page	1
Use	-2	page	1

Foreword

This manual contains Technical Information as well as instructions on repairs for Porsche vehicles. It is intended for the sole use of workshops belonging to Porsche AG.

The descriptions form the basis for professional and correct maintenance and repair work. The content of the work procedures described is based on the level of training of a fitter who has completed vocational training and has a sound knowledge of the product. This level of knowledge is necessary in order to carry out the work described.

Warning notes

The warning notes and safety instructions are classified by the respective signalling word (Danger, Warning, Caution) beside the warning symbol.



Danger!

Warns against death or very serious injury which will certainly occur if the instructions are not observed.



Warning!

Warns against death or very serious injury which may occur if the instructions are not observed.



Caution!

Warns against minor injury or damage to property if the instructions are not observed.

To prevent injury and restricted operating and traffic safety of the vehicle, or damage to the vehicle as the result of incorrect work, read these instructions carefully and observe them without fail.

It is not possible for Porsche AG to give a detailed evaluation of all danger situations for the persons carrying out the work. It is therefore imperative that all persons carrying out repair and maintenance work on Porsche vehicles use their specialist knowledge to ensure that their own safety is not at risk and the procedure chosen will not have any negative effects on the vehicle - especially with regard to safety.

It is therefore expressly specified that all work involved in the work procedures described should be carried out only in accordance with the valid guidelines and regulations of the local authorities responsible with respect to health and accident prevention and environmen-

tal protection, and in compliance with the legal requirements of individual countries.

Notes

Notes contain advisory information related to the work procedure which makes the fitter's work easier. The following pictogram indicates this information:



Note!

Contains advisory information which makes the work procedure easier.

Due to the continuous development and improvement of our vehicles, there may be discrepancies between the actual technical status of the vehicles and the work descriptions. Any existing deviations are corrected by means of supplements, and the scope of the descriptions is extended with supplements.

Porsche AG retains the right to implement changes at any time and without prior notice.

Use

The workshop documentation for the 911 Carrera (1996) model has the designation

-"911 Carrera (1996)" Technical Manual- and contains Technical Information as well as instructions on repairs.

The integration of the technical information published in the "911 Carrera (1996)" Technical Manual with the instructions on repairs provides the user with a complex reference work that combines into one book associated or cross-referenced material of relevance to workshops and originating from various information media.

The "911 Carrera (1996)" Technical Manual consists of 15 folders, subdivided into the following Groups

- ◆ 0 Entire vehicle - General
- ◆ 0 Diagnosis, 1 Engine, part 1 (up to Repair Group 45)
- ◆ 0 Diagnosis, 1 Engine, part 2 (up to Repair Group 69)
- ◆ 1 Engine, part 1 (up to Repair Group 13)
- ◆ 1 Engine, part 2 (as of Repair Group 15)
- ◆ 2 Fuel, exhaust, engine electronics
- ◆ 3 Transmission, manual transmission
- ◆ 3 Transmission, automatic transmission
- ◆ 4 Running gear
- ◆ 5 Body
- ◆ 6 Body equipment, exterior
- ◆ 7 Body equipment, interior
- ◆ 8 / 9 Air conditioning / Electrics
- ◆ 9 Circuit diagrams, part 1 (up to and including '99 model)
- ◆ 9 Circuit diagrams, part 2 (as of and including '00 model)

The two folders with Group 0 are to be regarded as one folder; i.e. file the "Technical Information" notices only in the folder "Group 0 Diagnosis, part 1" **-up to Repair Group 45-**.

The second folder Group 0 Diagnosis, part 2 **-as of Repair Group 69-** includes the further Repair Groups belonging to Group 0.

The two folders with Group 1 are to be regarded as one folder; i.e. file the "Technical Information" only in front of the repair descriptions in the folder Group 1 – Engine, part 1 **-up to Repair Group 13-**.

The second folder Group 1 Diagnosis, part 2 **-as of Repair Group 15-** includes the further Repair Groups belonging to Group 0.

The two folders with Group 9 are to be regarded as one folder; i.e. file the "Technical Information" notices only in the folder Group 9 Circuit diagrams, part 1 **-up to '99 model-**.

The second folder Group 9 Circuit diagrams, part 2 **-as of '00 model-** includes the further Repair Groups belonging to Group 9.

The "Boxster (986)" Technical Manual has the same structure in each folder, with the following breakdown for all Groups:

Title page: "Boxster (986)" Technical Manual

> Foreword

Title page: "Technical information"

> Table of contents, Technical information> Technical information

Title page: "Repair"

> Repair Groups: overview> Table of contents, repairs> General technical data> Instructions on repairs

As can be seen from the breakdown, the published Technical Information is in the front part of each folder – numbered according to the Groups. The Table of Contents assigned to each Group will be periodically updated.

Following the Technical Information, separated by a title page, the instructions on repairs – assigned according to the Groups or broken down into Repair Groups – are included in the folders.

The instructions on repairs will be extended and updated by means of supplements.



Note!

Sheets that already exist in the "911 Carrera (996)" Technical Manual and are updated or revised and thereby exchanged by a supplement are designated in the footer with the supplement number corresponding to the current version: e.g. "Printed in Germany - 2,- 2000"



Note!

Due to a system modification in the Technical Literature production, the following procedures have changed in model year 2000!

- 1 - The previous record sheet in the folder "0-General" and the supplement contents sheet -red sheet- have been omitted. A supplement overview now appears separately in each folder. The new supplement contents sheet can be destroyed after the supplement is filed in the folder.



Note!

The supplement overview sheet is replaced with the relevant supplement in the corresponding folder and must no longer be maintained by hand.

- 2 - The page numbering in the new and the replaced chapters are no longer continuous. Each new chapter is now given an additional chapter number followed by the page number e.g.-2 Page 11 ⇒ Rep. Gr. 0; General
- 3 - The old page numbering still applies to existing chapters and those that are not replaced.

Group 0:	Entire vehicle – General	0
	Sales check	01
	Maintenance	03
Group 0:	Diagnosis	0
	On-board diagnosis	03
	DME diagnosis	24
	Tiptronic diagnosis	37
	ABS diagnosis	45
Group 0:	Diagnosis	0
	Convertible-top diagnosis	61
	Airbag diagnosis	69
	Roll-over protection system diagnosis	69
	Seat memory diagnosis	72
	Heating diagnosis	80
	Alarm system diagnosis	90
	PCM diagnosis	91
	ParkAssistent diagnosis	91
	HBA diagnosis	94
Group 1:	Engine	1
	Engine – Crankcase, suspension	10
	Engine – Crankshaft, pistons	13
Group 1:	Engine	1
	Engine – Cylinder head, valve drive	15
	Engine – Lubrication	17
	Engine – Cooling	19
Group 2:	Fuel, exhaust, engine electronics	2
	Fuel supply, control	20
	Exhaust system, turbocharging	21
	Fuel system, electronic injection	24
	Fuel system, K-Jetronic	25
	Exhaust system	26
	Starter, power supply, cruise control	27
	Ignition system	28
Group 3:	Transmission, manual transmission	3
	Clutch, control	30
	Manual transmission – Actuation, housing	34
	Manual transmission – Gears, shafts, int. gearsh.	35
	Final drive, differential, differential lock	39
Group 3:	Transmission, automatic transmission	3
	Torque converter	32
	Automatic transmission – Actuation, housing	37
	Automatic transmission – Gears, control	38
	Final drive, differential, differential lock	39



Group 4:	Running gear	4
	Front wheel suspension, drive shafts	40
	Rear wheel suspension, drive shafts	42
	Wheels, tires, suspension alignment	44
	Anti-Lock Brake System (ABS)	45
	Brakes – Brake mechanics	46
	Brakes – Hydraulics, regulator, booster	47
	Steering	48
Group 5:	Body	5
	Body front	50
	Body center, roof, frame	51
	Body rear	53
	Lids, flaps	55
	Door front, central locking system	57
Group 6:	Body equipment, exterior	6
	Sliding roof	60
	Convertible top, hardtop	61
	Bumpers	63
	Glazing, window control	64
	Exterior equipment	66
	Interior equipment	68
	Passenger protection	69
Group 7:	Body equipment, interior	7
	Linings, insulation	70
	Seat frames	72
	Seat upholsteries, covers	74
Group 8:	Air conditioning	8
	Heating	80
	Ventilation	85
	Air conditioning	87
	Auxiliary air conditioning system	88
Group 9	Electrics	9
	Instruments, alarm system	90
	Radio, telephone, on-board computer, navigation	91
	Windshield wiper and washer system	92
	Lights, lamps, switches exterior	94
	Lights, lamps, switches interior, theft protection	96
Group 9:	Circuit diagrams	9
	Wiring (up to and including the '99 model)	97
Group 9:	Circuit diagrams	9
	Wiring (from the '00 model)	97

Table of Contents

7 Body equipment, interior

7 Body equipment, interior

7	Special notes for the care of soft-look paint surfaces	7-1	page	1
	Light soiling (e.g. dust)	7-1	page	1
	Heavy soiling (e.g. oily, greasy dirt)	7-1	page	1

70 Linings, insulation

701837	Disassembling and assembling the dashboard	70-1	page	1
	Disassembling the dashboard	70-1	page	2
	– Removing the regulator for wiping interval	70-1	page	8
	– Removing the cigarette lighter	70-1	page	8
	Assembling the dashboard	70-1	page	9
	– Installing the regulator for wiping interval	70-1	page	15
	– Installing the cigarette lighter	70-1	page	15
701819	Removing and installing the dashboard	70-13	page	1
705919	Removing and installing door trim panel	70-19	page	1
	Remove door trim panel	70-19	page	2
	Install door trim panel	70-19	page	4
	Additional assembly notes on bowden cable variant A and inner door handle	70-19	page	5
	– Up to Veh. Ident. Nos. Bowden cable variant A	70-19	page	6
	– Up to Veh. Ident. Nos. Inner door handle variant A	70-19	page	6
	– Removal and installation of bowden cable variant A	70-19	page	6
	Assembly note on door film for vehicles without side airbag	70-19	page	7
	Fitting sliding strip on the inner door panel	70-19	page	7
706519	Removing and installing oddments compartment lid	70-20	page	1
	Removing and installing oddments compartment lid	70-20	page	2
702219	Removing and installing cowl panel cover	70-25		
708419	Removing and installing roof lining – cabriolet	70-29		
707519	Removing and installing side-panel lining	70-39	page	1
	Removing side-panel lining	70-39	page	2
	Installing side-panel lining	70-39	page	4
707519	Removing and installing side-panel lining – cabriolet	70-45	page	1
	Removing side-panel lining	70-45	page	2
	Installing side-panel lining	70-45	page	4
705719	Removing and installing trim of A, B and C-pillars	70-51	page	1
	Removing and installing trim of A, B and C-pillars	70-51	page	2
	Installing trim of A, B and C-pillars	70-51	page	4
708419	Removing and installing roof lining	70-57		

72 Seat, frames

720119	Removing and installing front seat	72-1	page	1
	Removing front seat	72-1	page	2
	Installing front seat	72-1	page	4
720119	Removing and installing bucket seat – GT3	72-7		

Special notes for the care of soft-look paint surfaces



Caution!

Damage to the soft-look paint coat if the cleaning agents or solvents available as accessories for cleaning the vehicle interior are used. This also applies to the use of plastic polish 999.901.021.41 from the Porsche care set.

The contents of these agents etch the paint coat (paint swells, rubber-like texture). Consequently, the paint coat can fall off the substratum when a mechanical load is applied.

Furthermore, the surface may shine brightly after using the cleaning agents.

- **The following procedure is recommended for the care or cleaning of soft-look paint surfaces on the basis of laboratory tests.**

Light soiling (e.g. dust)

It is possible to clean light soiling by selecting an option from the following cleaning tools and cleaning fluids:

Cleaning tools	Cleaning fluid	Cleaning procedure
Soft household sponge	Clear water	Gentle wiping movements, do not apply pressure
Soft, lint-free cloth	Water with small amount of commercially available washing-up liquid added	
	Interior window cleaner (from Porsche care set) Note Observe cleaning instructions, wipe down with clear water if necessary	

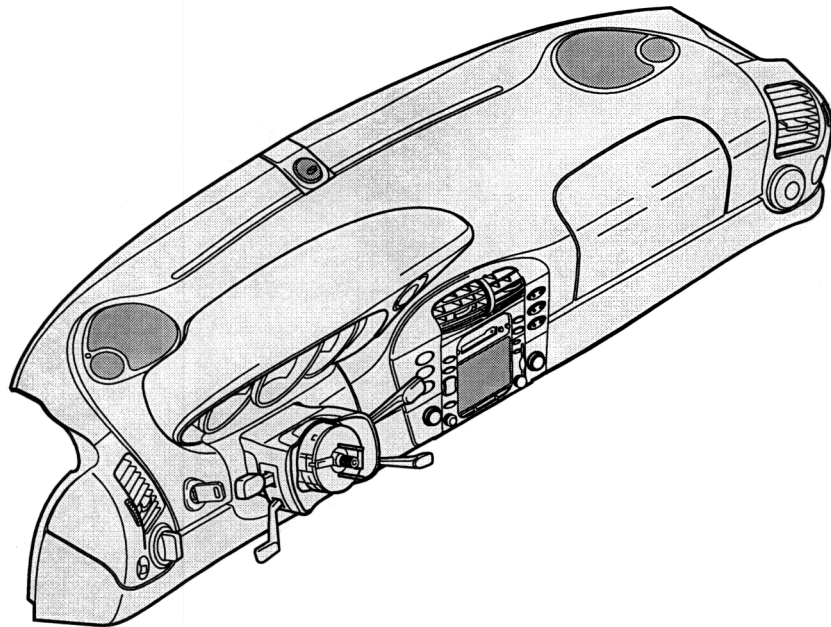
Heavy soiling (e.g. oily, greasy dirt)



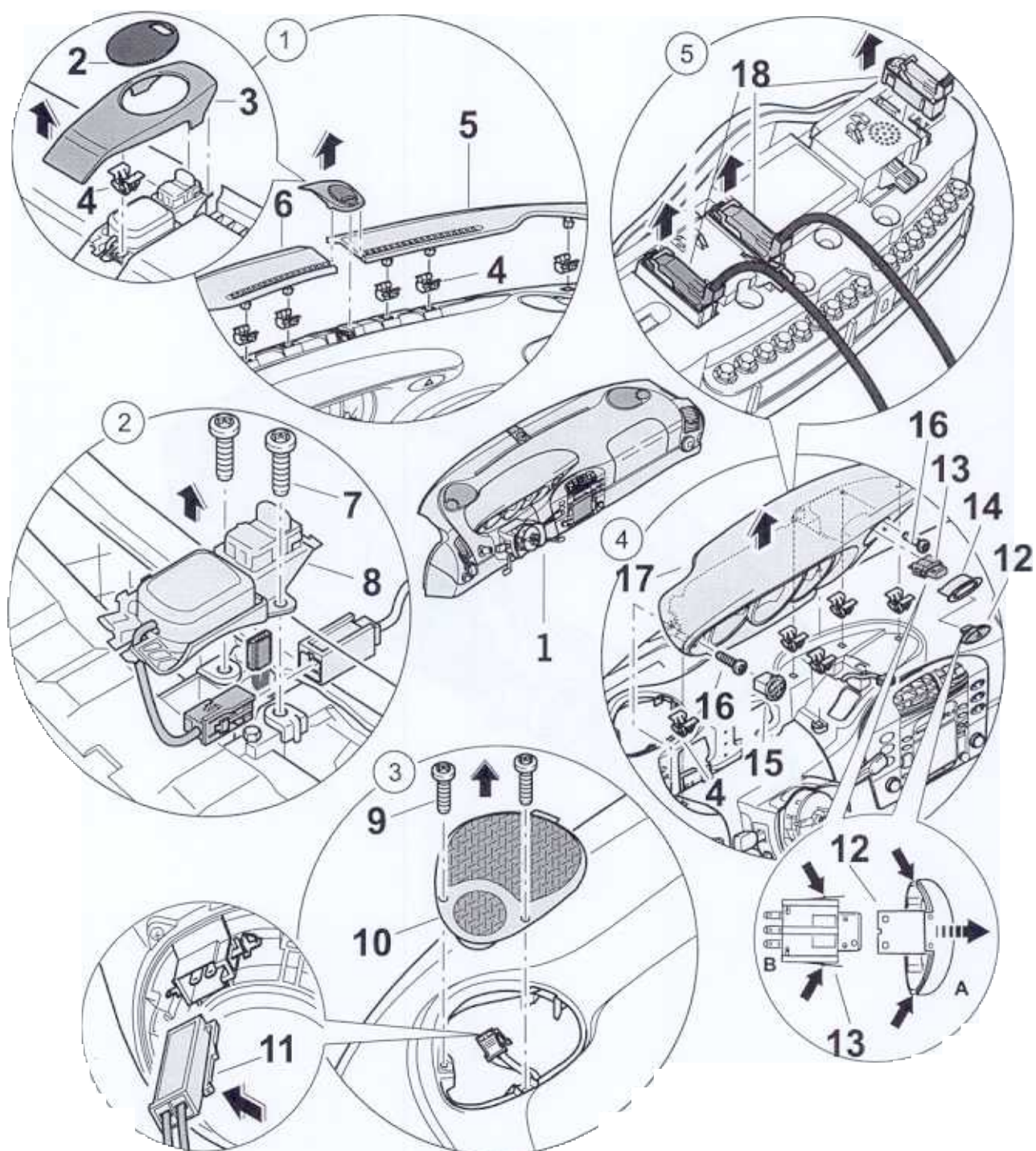
It is possible to clean heavy soiling by selecting an option from the following cleaning tools and cleaning fluids:

Cleaning tools	Cleaning fluid	Cleaning procedure
Soft household sponge	Water with small amount of commercially available washing-up liquid added	Gentle wiping movements, do not apply pressure
Soft, lint-free cloth	Interior window cleaner (from Porsche care set) Note Observe cleaning instructions, wipe down with clear water if necessary	
	Solvent naphtha Note: Use solvent naphtha only, other solvents are not permissible!	

Disassembling and assembling the dashboard



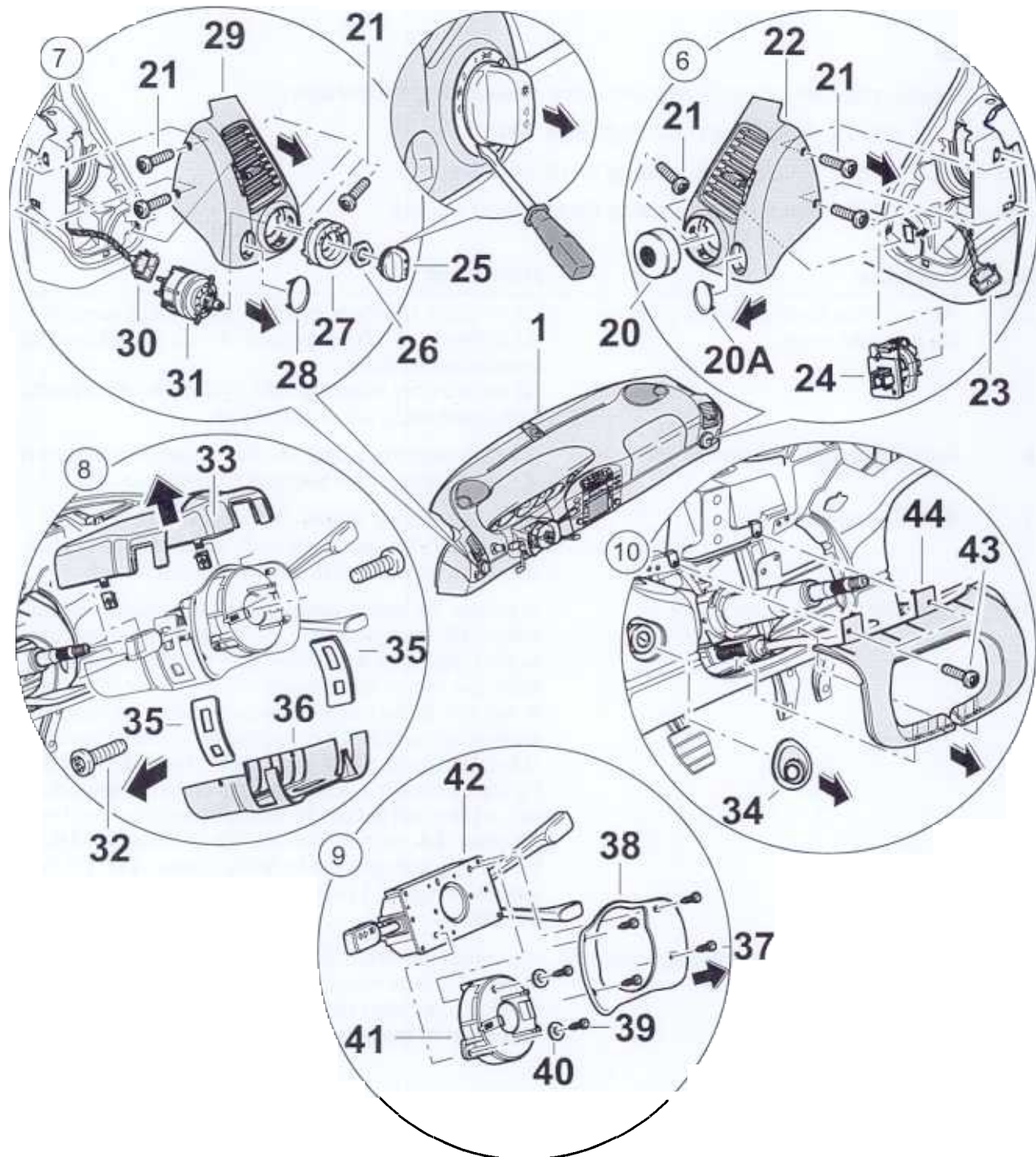
Disassembling the dashboard



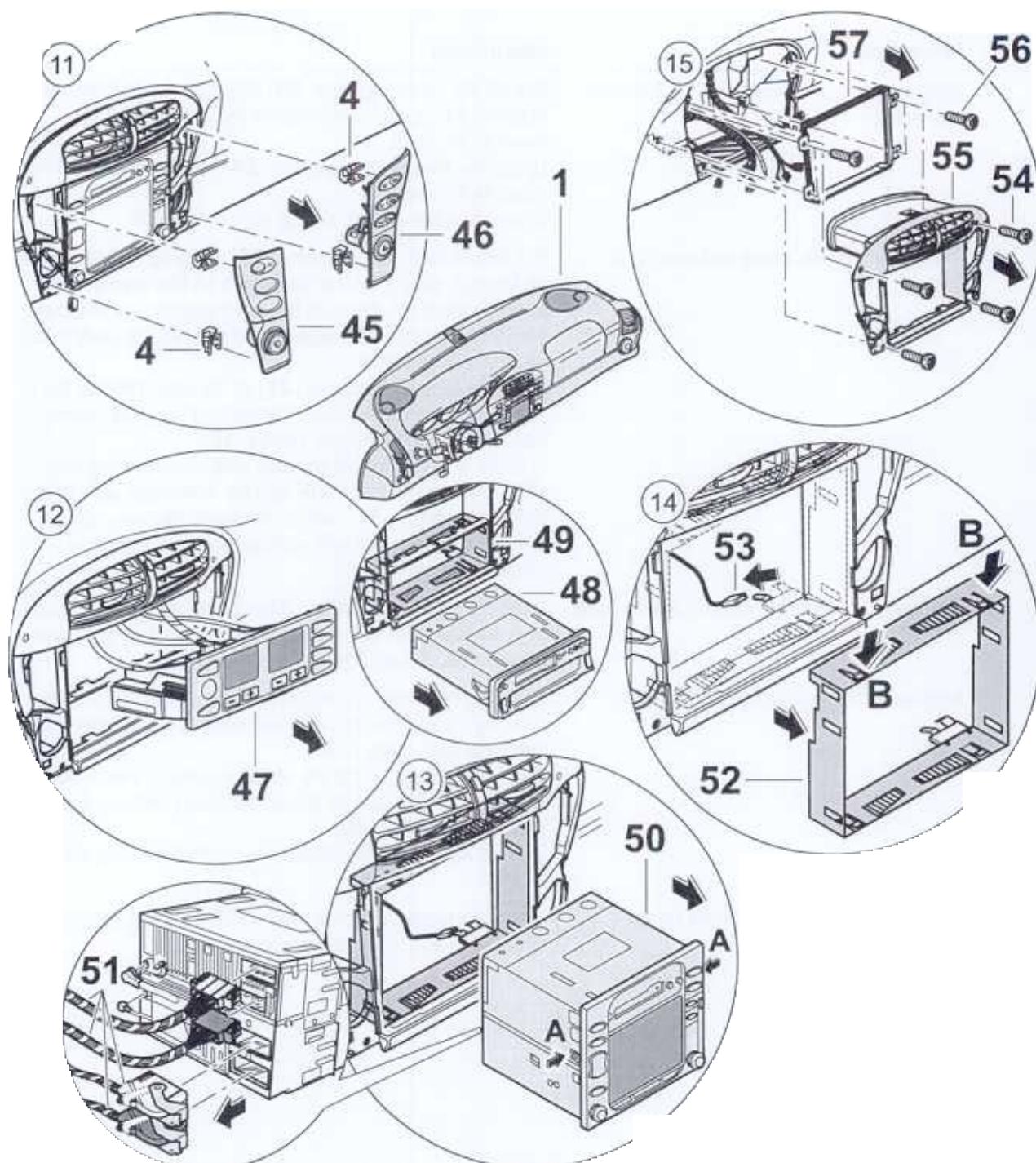
**Note!**

- ♦ The following components must be removed before disassembling the dashboard.
- ♦ ⇒ Rep. Gr. 705719; Removing and installing A-pillar trim.
- ♦ ⇒ Rep. Gr. 695819; Removing and installing the driver's airbag
- ♦ ⇒ Rep. Gr. 695919; Removing and installing the passenger's airbag

No.	Procedure	Instructions
	Removing the alarm readiness cover and the defroster cover	Lift the alarm readiness cover -3- and unclip it upwards out of the clip -4- . The lens cover -2- can be unclipped for replacement purposes. Lift the defroster covers left and right -5, 6- with a plastic spatula and unclip out of the clips -4- .
2	Removing the alarm readiness unit	Undo the fastening screws -7- , lift the alarm readiness unit -8- and disconnect the electrical connection.
3	Removing the loudspeaker	Undo the fastening screws -9- , raise the outside of the loudspeaker -10- and guide it out. At the plug connection, -11- press the locking tab -arrow- and disconnect.
4	Removing the instrument mount	To remove the hazard warning light switch: switch on the switch -12- (button comes out). There are small openings on the sides which now project over the instrument cowl. Insert two narrow screwdrivers into the openings -arrow A- and pull off the button towards the front. The hazard warning light switch -13- is held in the instrument bridge -17- by two locking hooks -arrow B- . Press the right locking hook toward the switch, grip the button holder with a pair of pliers and pull out the switch toward the front. Press the collar -14- out from the rear. Pull off the cover -15- on the left side and undo the fastening screws -16- . Lift the instrument mount -17- on the left and right and unclip from the clips -4- .
5	Disconnecting the electrical plug connection	Disconnect the electrical connection -18- on the rear side of the instrument mount. To do so, press the locking tab of the plug connection and unlock the locking lever in the -direction of the arrow- .



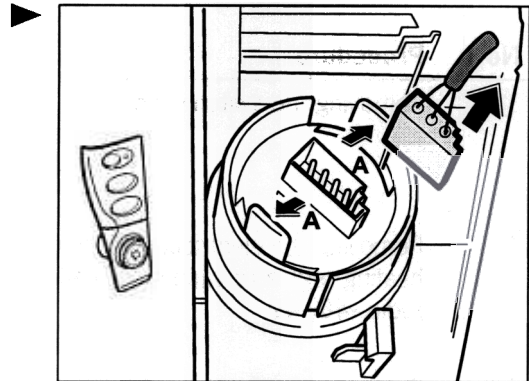
No.	Procedure	Instructions
	Removing the side vents and the temperature sensor	Pull off the covering caps -20, 20A- . Undo the fastening screws -21- at the side, remove the side vent -22- towards the front. Unclip the temperature sensor -24- out of the dashboard towards the rear. Disconnect the electrical plug connection -23- .
7	Removing left side vents and main light switch	Pull forward the control button -25- of the light switch -31- as far as it will go -in the direction of the arrow- towards the front. Press in the locking device at the lower side using a small screwdriver and remove the control button towards the front. Undo the fastening screws -21- at the side, remove the side vent towards the front. Disconnect the plug connection -30- of the main light switch -31- . In order to disassemble the side vent, the covering cap -28- , the fastening nut -26- and the inner race -27- of the main light switch -31- can be removed. Remove light switch -31- from the side vent by turning it slightly in clockwise direction.
8	Removing the steering column switch cover	Undo the fastening screws -32- on the lower steering column switch cover -36- and remove both steering column covers -33, 36 or 35- .
9	Removing the steering column switch	Undo the fastening screw -37- in the cover -38- and the steering column switch -42- and remove. Disconnect the electrical plug connection. In order to disassemble the steering column switch -42- , the slip ring -41- can be disconnected by undoing the fastening screws -39, 40- . See: ⇒ Rep. Gr. 695419; Removing and installing the contact unit.
10	Removing the steering column cover	Undo the fastening screw -43- in the steering column cover -44- and unclip the cover upwards.



No.	Procedure	Instructions
	Removing the switch cover	Unclip the switch cover on the left and right -45, 46- towards the front. Disconnect the electrical plug connections of the tip switches.
12	Removing the electrical air-conditioning and heating regulator variant -47- and the car radio -48, 49-	See: ⇒ Rep. Gr. 870219 ; Removing and installing the heating/air-conditioning control. See: ⇒ Rep. Gr. 912019; Removing and installing the car radio.
13	Removing display and operator control unit (PCM)- 50-	Press in and hold both spring clips -arrow A- . Pull out the display and operator control unit -50- . Disconnect the electrical plug connections -51- on the rear side of the display and operator control unit. See: ⇒ Rep. Gr. 911019; Removing and installing display and operator control unit (PCM).
14	Removing the PCM retaining bracket	Raise the retaining clip -arrow B- of the retaining bracket -52- and guide it out of the cut-out of the central vents -55- . Pull off the ground cable -53- .
15	Removing the central vent	Undo the fastening screws -54- and guide the central vent -55- out of the dashboard -1- . Undo the fastening screws -56- from the inside of the retaining bracket -57- .

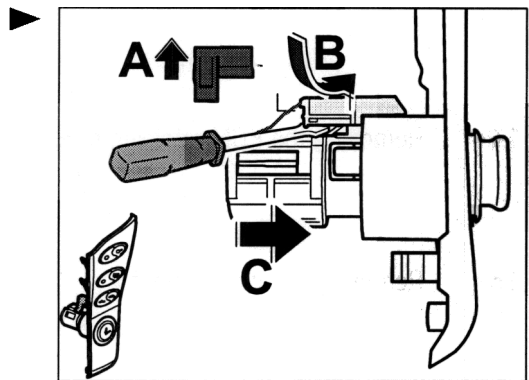
Removing the regulator for wiping interval

- 1 - Disconnect the electrical plug connection.
- 2 - Press the locking tabs of the regulator for the wiping interval -arrows A- outwards and guide the regulator out of the front cover towards the front.

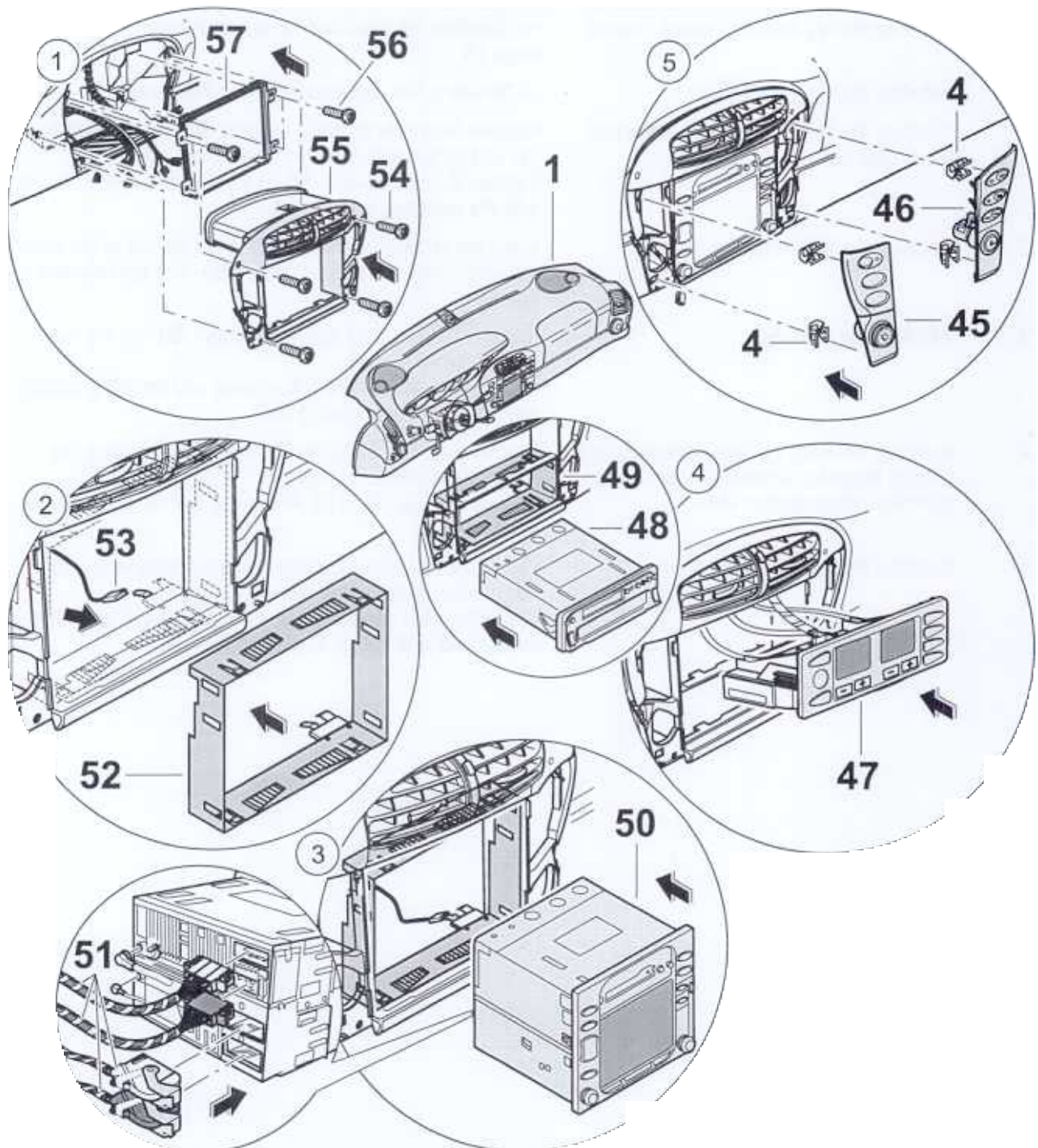


Removing the cigarette lighter

- 1 - Disengage the cover -arrow A- upwards.
- 2 - Press the lights bracket -arrow B- out to the side with a narrow screwdriver.
- 3 - Disengage the cigarette lighter in the direction of -arrow C- out of the front cover.

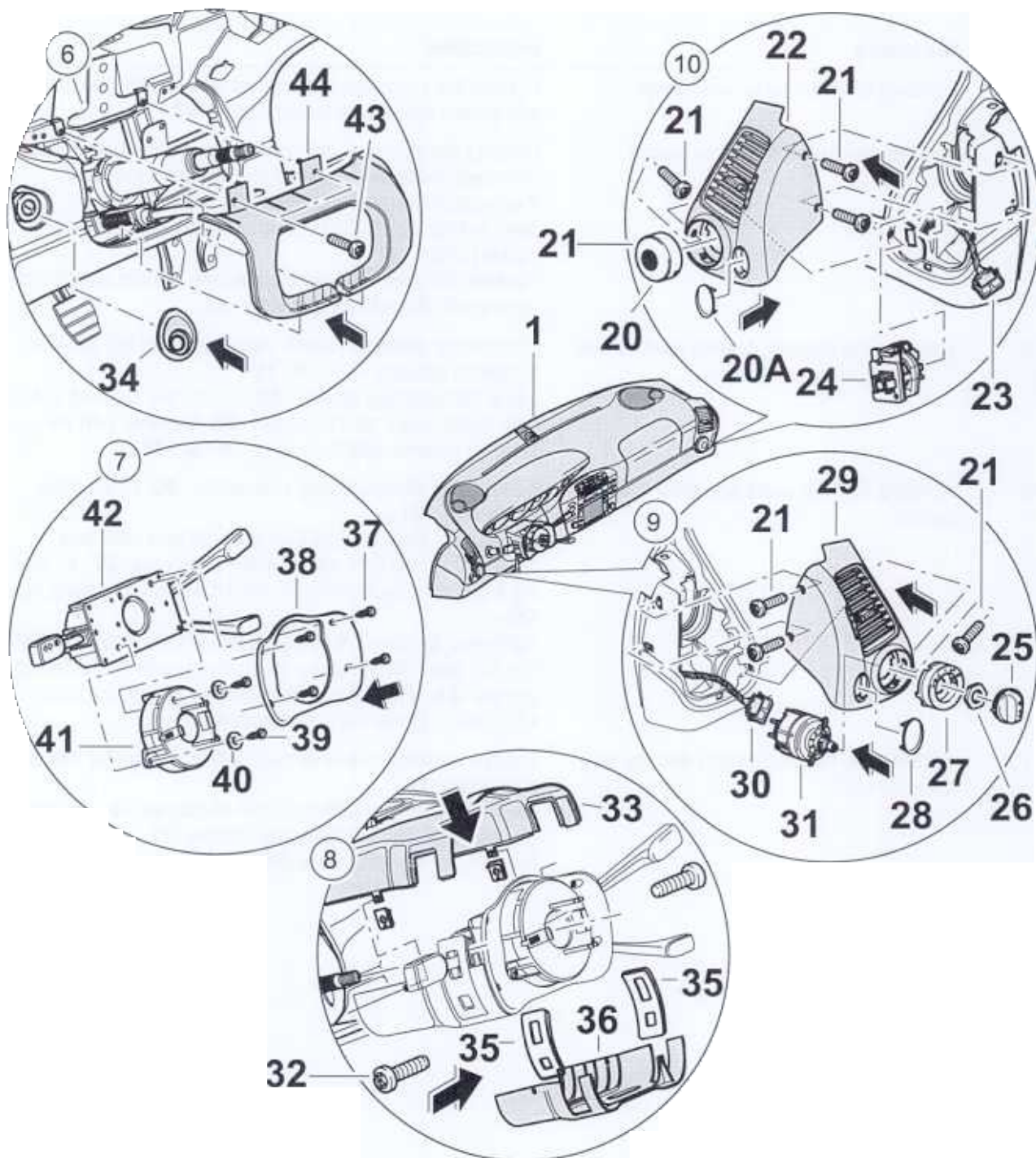


Assembling the dashboard

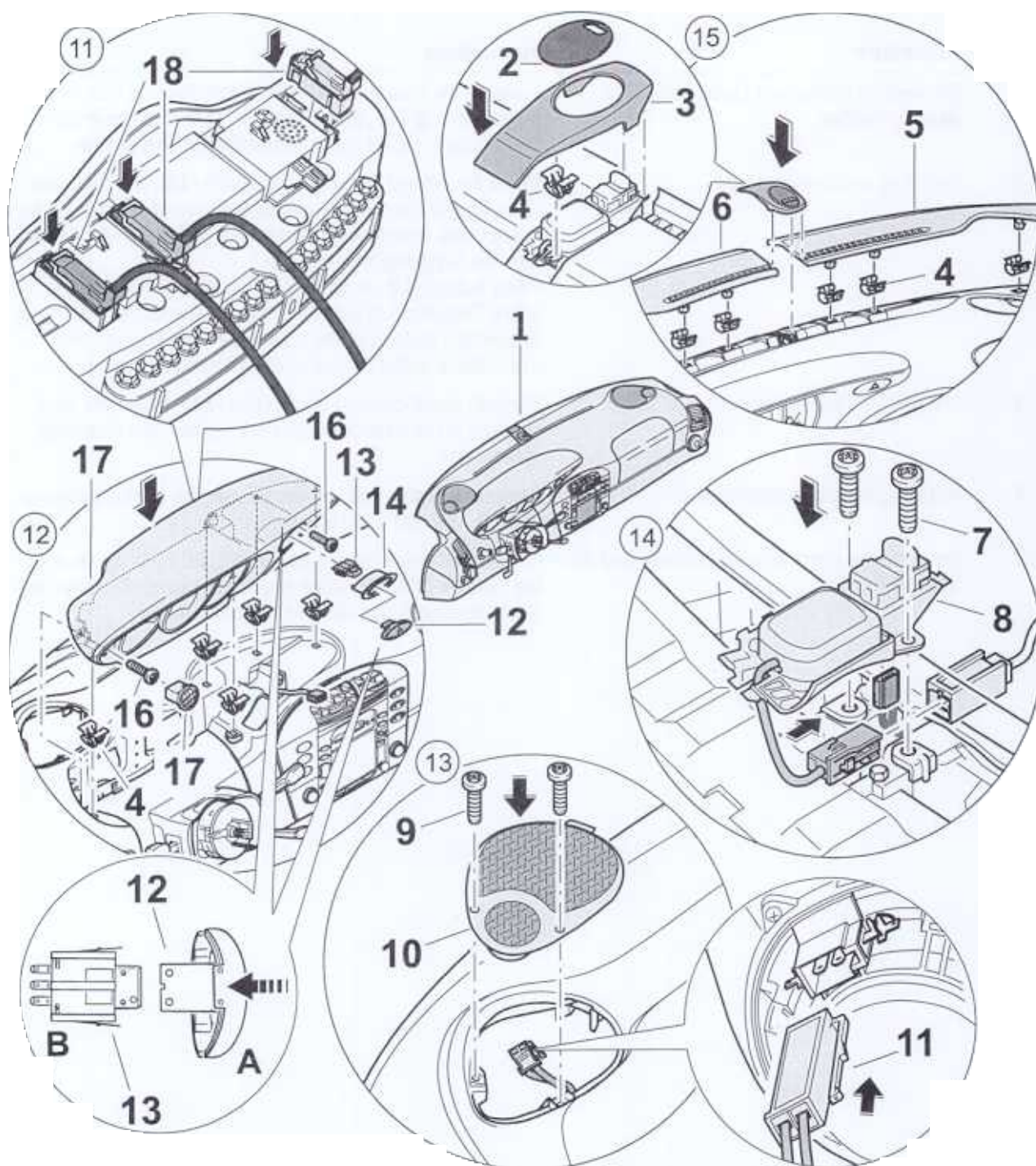


No.	Procedure	Instructions
	Installing the regulator for wiping interval	⇒ "Installing the regulator for wiping interval" in 70-1 page 15
	Installing the cigarette lighter	⇒ "Installing the cigarette lighter" in 70-1 page 15
	Installing the inside retaining bracket and the central vent	Position the inside retaining bracket -57- in the dashboard -1- and secure with the fastening screws -56- . Position the central vent -55- in the dashboard and secure with the fastening screws -54- .
2	Installing the PCM retaining bracket	Insert the retaining bracket -52- in the cut-out of the central vents. Plug the ground cable -53- into the retaining bracket.
3	Installing the PCM -50-	Connect the electrical plug connection -51- on the rear side of the PCM. See: ⇒ Rep. Gr. 911019; Removing and installing display and operator control unit (PCM).
4	Installing the electrical air-conditioning and heating regulator variant -47- and audio, communication system -48-	See: ⇒ Rep. Gr. 870219; Removing and installing the heating/air-conditioning control. See: ⇒ Rep. Gr. 912019; Removing and installing the car radio.
5	Installing the switch covers	Plug in the electrical plug connections. (Observe the colour designation of the wiring harness switches). Check the clips -4- and replace if necessary. Clip switch covers -45 and 46- in to the central vent.





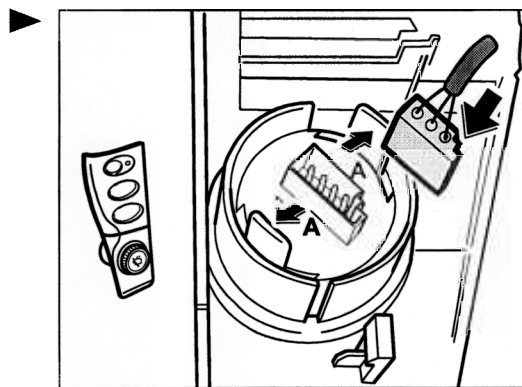
No.	Procedure	Instructions
	Installing the steering column cover	Position the steering column cover -44- on the dashboard and secure with the fastening screws -43- .
7	Installing the steering column switch	<p>Connect the electrical plug connection of the steering column switch -42- and position on the steering column. If necessary, install the contact unit -41-. See: ⇒ Rep. Gr. 695419; Removing and installing the contact unit.</p> <p>Position the cover -38- on the steering column switch and secure with the fastening screws -37-.</p>
8	Installing the steering column switch cover	<p>Position the steering column switch cover at the top and bottom or laterally -33, 36, 35-. Using the fastening screws -32-, screw the steering column switch cover at the bottom -36- together with the steering column switch cover at the top -33-.</p>
9	Installing left side vents and main light switch	<p>Connect the electrical plug connection -30- of the main light switch -31-. Position the inner race -27- in the side vent -29- and engage the main light switch in the inner race -27- by turning it slightly anti-clockwise. Fasten it with the fastening nut -26-. Tightening torque: -3.5 Nm (2.5 ftlb.)- Insert the side vent into the dashboard. Secure the side vent with the fastening screws -21-. Place the control button -25- on the main light switch. Press the covering cap -28- in.</p>
10	Installing the right side vents and the temperature sensor	<p>Engage the temperature sensor -24- from the rear into the dashboard -1-. Insert the side vent -22- in to the dashboard -1-. Secure the side vent with the fastening screws -21-. Press in the covering caps -20, 20A-.</p>



No.	Procedure	Instructions
	Connecting instrument cluster electrical plug connection	Connect the instrument cluster electrical plug connection. After inserting the plug connection -18- into the instrument mount, lock it in the -direction of the arrow- .
12	Installing instrument mount	Install the hazard warning light switch -13- and the collar -14- . Plug in the hazard warning light switch electrical plug connection. Insert instrument mount in the clip -4- . Secure with the fastening screws -16- . Place button -12- in position. If the vehicle is equipped with a "handsfree telephone", connect the microphone plug connection instead of the cover -17- and engage the microphone in the cut-out of the instrument mount.
3	Installing the loudspeaker	Connect electrical plug connection -11- . Insert the loudspeaker in the dashboard and secure with the fastening screws -9- .
14	Installing the alarm readiness unit	Connect the plug connection. Secure the alarm readiness unit -8- with the fastening screws -7- .
15	Installing the alarm readiness cover and the defroster cover	Clip the defroster covers on the left and right -5, 6- in to the clips -4- . Clip the alarm readiness cover -3- above the alarm readiness unit -8- into the clips -4- .

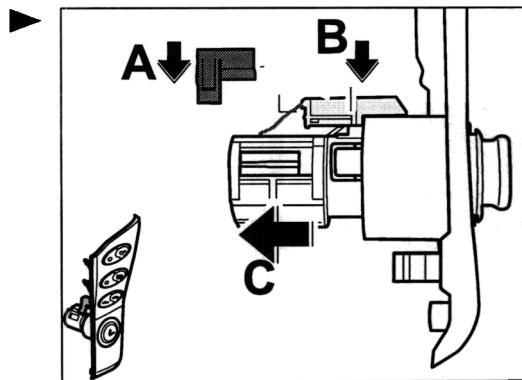
Installing the regulator for wiping interval

- 1 - Insert the regulator for the wiping interval into the front cover from the front. Ensure that the locking tabs -A- have engaged.
- 2 - Plug in the electrical plug connection.

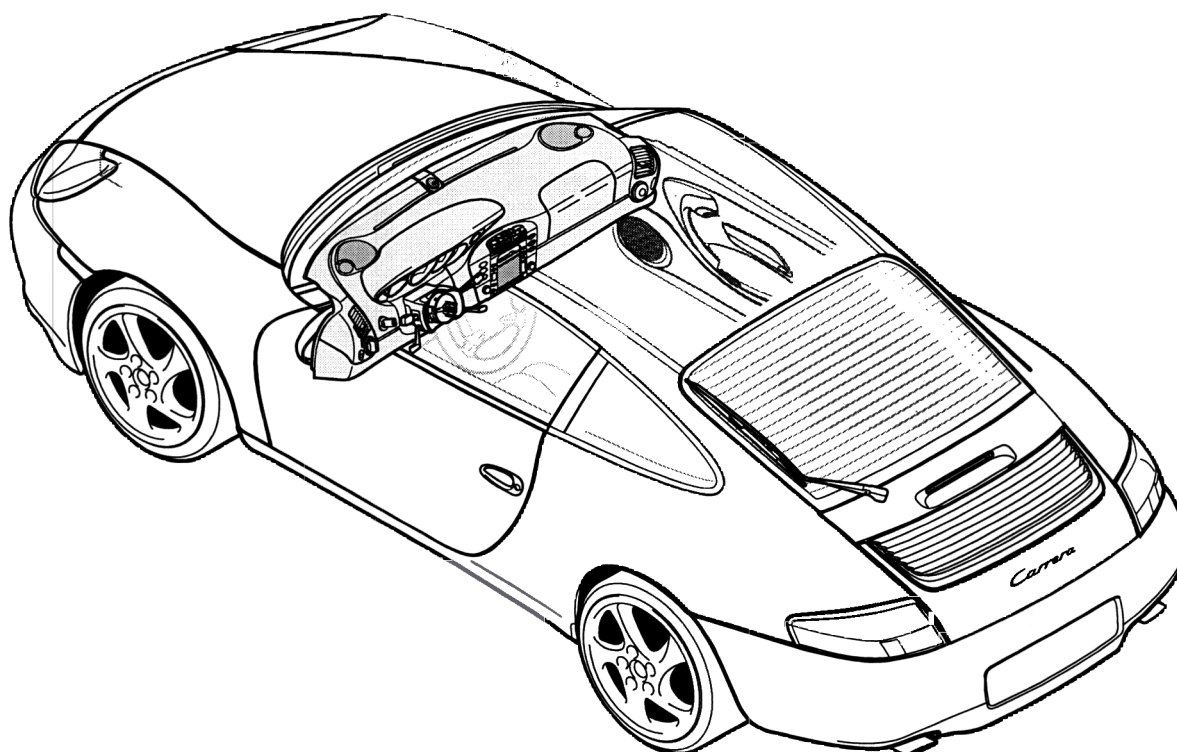


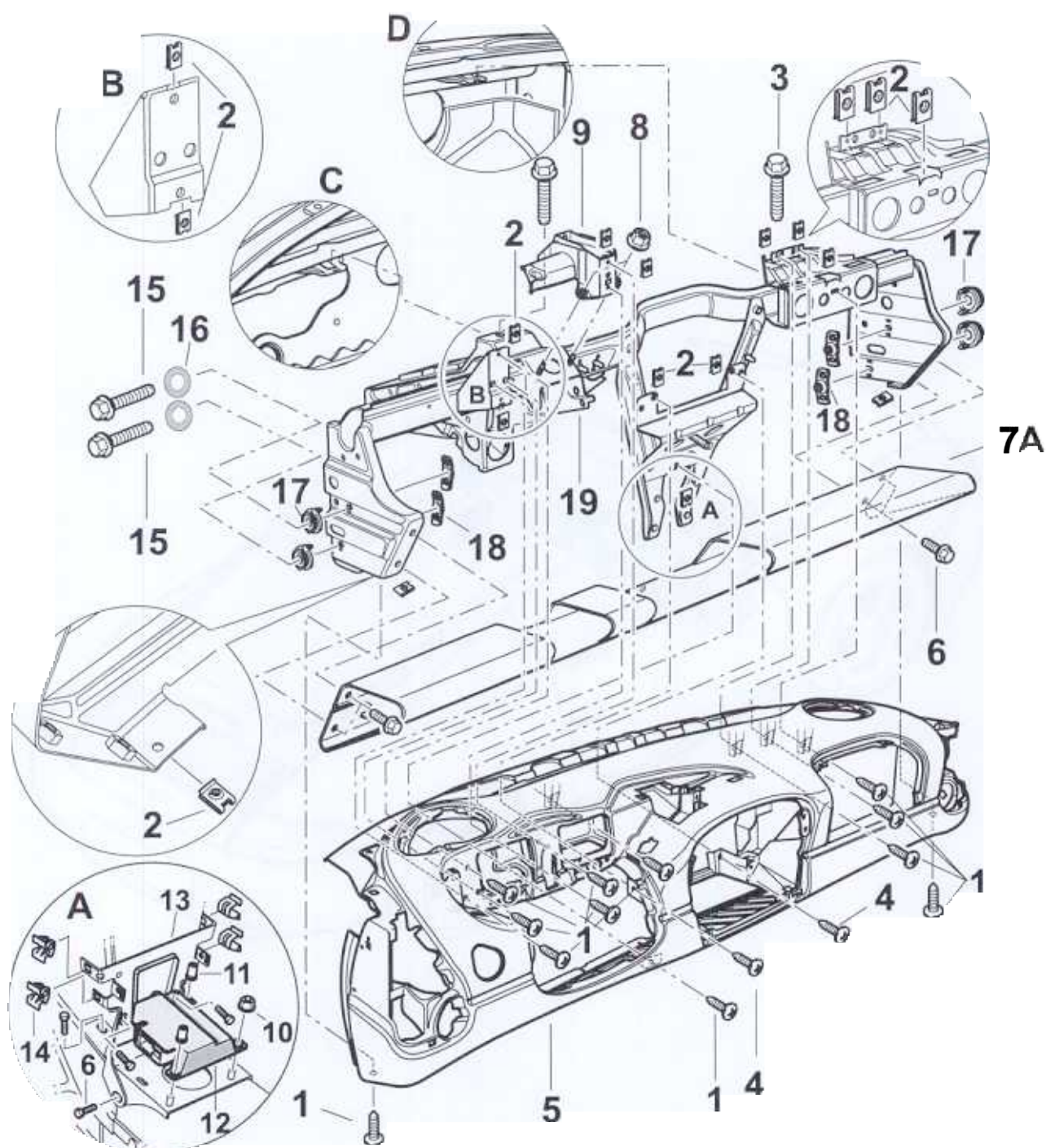
Installing the cigarette lighter

- 1 - Press the illumination ring with the cigarette lighter -C- into the front cover from the front.
- 2 - Clip the lights bracket -B- into place. Ensure that the locking tabs have engaged.
- 3 - Engage cover -A-. Ensure that the locking tabs have engaged.



Removing and installing the dashboard





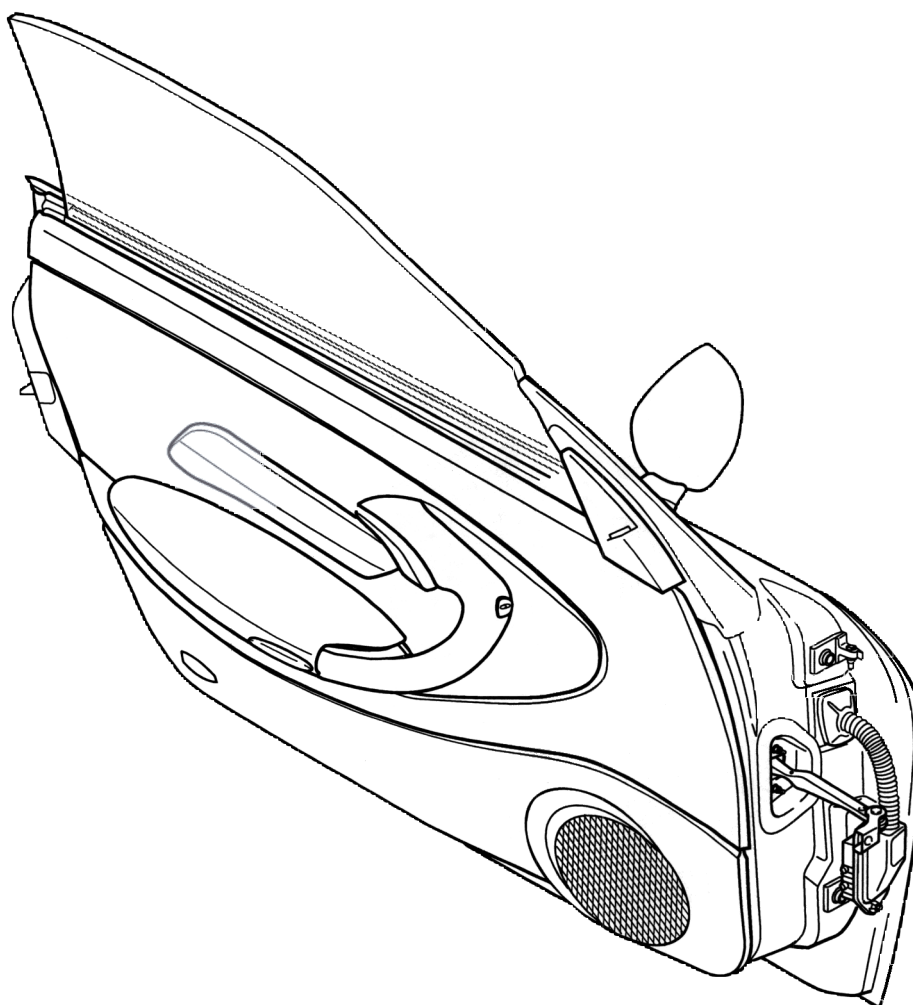
**Note!**

Before removing the dashboard, the dashboard must be disassembled. ⇒ **70-1** "Disassembling and assembling the dashboard"

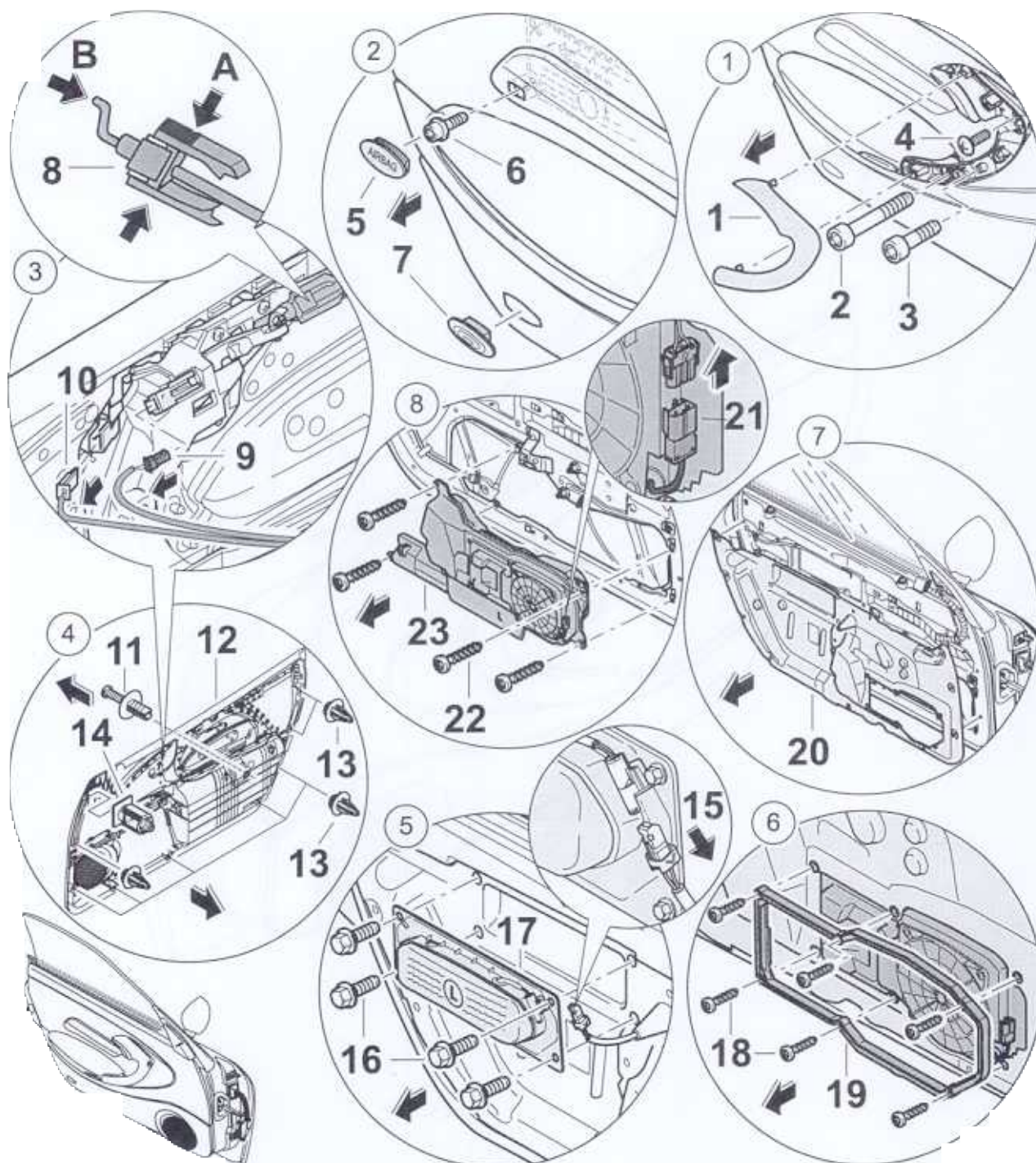
No.	Designation	Qty.	Removal	Installation
1	Fastening screw	11	Undo fastening screws -1- from the dashboard -5-.	Screw in.
2	Sheetmetal nut	11		Inspect and replace if necessary.
3	Fastening screw	2	Undo fastening screws -3- from the dashboard -5-.	Screw the dashboard -5- to the support frame with the fastening screws -3-.
4	Fastening screw	2	See: Point 5	See: Point 5
5	Dashboard	1	Undo fastening screws -3- from the dashboard -5-.	Position the dashboard -5- on the support frame -19- and tighten the fastening screws -3-.
6	Fastening screw	4	See: Point 7A	See: Point 7A
7A	USA variant, knee protector strip	1	Undo fastening screw -6- from the knee protector strip -7A-. Remove the knee protector strip.	Secure the knee protector strip -7A- on the support frame -19- and tighten the fastening screw -6-.
8	Collar nut M6	2		Tightening torque: -10 Nm (7.5 ftlb.)-
9	Holder	1		Secure the holder -9- and screw down with the collar nuts -8-. Tightening torque: -10 Nm (7.5 ftlb.)-
10	Collar nut M6	1		Tightening torque: -10 Nm (7.5 ftlb.)-
11	Shear-off nut	2	Undo the shear-off nut with special tool 9259	Tightening torque: -10 Nm (7.5 ftlb.)-
12	Airbag control module	1	See: ⇒ Rep. Gr. 695319; Removing and installing the triggering unit for the airbag.	See: ⇒ Rep. Gr. 695319; Removing and installing the triggering unit for the airbag.
13	Cover panel	4	Remove	Fix the cover panel in the body and the support frame -19- and screw down with the fastening screws -6-. Tightening torque: -10 Nm (7.5 ftlb.)-
14	Sheetmetal clip	4		
15	Fastening screw	4		Tightening torque: -23 Nm (17 ftlb.)-

No.	Designation	Qty.	Removal	Installation
16	Washer	4		
17	Compensating element	4	The compensating element -17- is released by undoing the fastening screw -15- .	By screwing in the fastening screws -15, 16- , the compensating element -17- can be fixed and secured.
18	Threaded plate	4		Is screwed into position with the compensating element -17- and the fastening screw -15, 16- .
19	Support frame	1	Undo the fastening screws -15- in the compensating elements -17- and guide the support frame -19- out of the body.	Insert support frame -19- into the body. Fix compensating elements -17- to the support frame and screw down with the fastening screws -15, 16- .

Removing and installing door trim panel



Remove door trim panel



**Warning!**

Warning! Airbag could inflate. Danger of injury or damage during fitting!

- 1. Remove ignition key 2. Disconnect and cover the negative terminal of the battery 3. After the battery is disconnected, assembly work or work on the vehicle may be started after a waiting period of 1 minute.

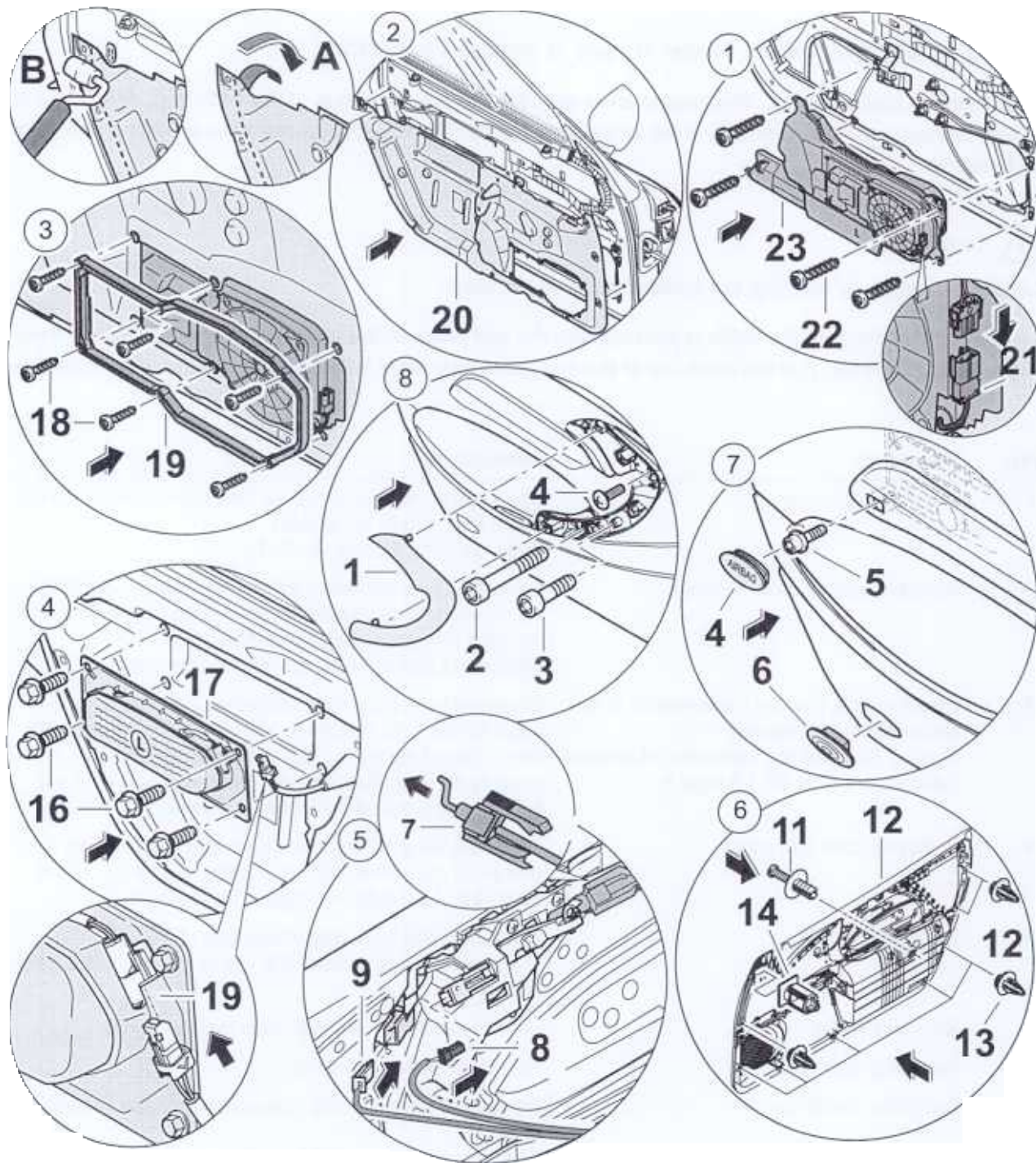
**Caution!**

Caution! Damage by bending the bowden cable at the hook.

- The hook of the bowden cable is pressed into the end piece of the cover for protection during transport and assembly. Pull the hook out of the end piece only after installation in the inner door release.

No.	Procedure	Instructions
		Use a plastic spatula to release the clipped connection out of the door handle on all sides. Undo fastening screws -2, 3, 4- .
2	Removing plastic cover (airbag)	Press the cover out with a narrow screwdriver -5- . Undo the fastening screw seated below it. Press light -7- out of the door trim panel using a plastic spatula -10- . Disconnect (pull off) electrical plug connection.
3	Disconnecting bowden cable version B and electrical plug connection See: ⇒ "Removal and installation of bowden cable variant A" in 70-19 page 6	Disconnect electrical plug connection from the micro-switch for the door handle -9- and orientation lighting -10- . Press lugs of the plastic clip -arrow A- and pull out towards the rear. Push bowden cable variant B -8- back into the end piece of the sleeve -arrow B- .
4	Removing door trim panel	Take expanding nut out of the door trim panel. Unclip door trim panel out of the door on all sides and lift up and off. Clips -13, 14- must be replaced for assembly.
5	Removing airbag	Disconnect electrical plug connection -15- . Unscrew fastening screws -16- out of the side airbag and remove.
6	Removing frame	Undo fastening screws -18- from the frame -19-
7	Removing door film	Pull off carefully on all sides.
8	Removing sound box	Disconnect electrical plug connection from the sound box -21- . Undo fastening screws -22- on the sound box -23- .

Install door trim panel



No.	Procedure	Instructions
	Installing sound box	Position sound box -23- in the door. Screw on the sound box with the fastening screws -22- . Connect electrical connection -21- .
	Stick sliding strip onto the front and rear of the inner door panel	⇒ "Fitting sliding strip on the inner door panel" in 70-19 page 7
2	Affix door film. ⇒ "Assembly note on door film for vehicles without side airbag" in 70-19 page 7	Peel off protective film -A- on the door film and position on the door. Using a roller -B- , press on the door film on all sides -20- .
3	Installing frame	Position the frame -19- on the sound box. Make sure that the door film cut-out is positioned correctly on the sound box. Screw in fastening screws -18- and tighten.
4	Installing side airbag	Position side airbag -17- on the door and tighten fastening screws -16- . Tightening torque: -10 Nm (7.5 ftlb.)- The fastening screws -16- must be replaced each time they are undone.
5	Engaging bowden cable variant B. Connect electrical plug connection. See: ⇒ "Removal and installation of bowden cable variant A" in 70-19 page 6	Engage bowden cable variant B -7- in the door handle. Pull the hook out of the end piece of the sleeve only after installation in the door handle. Clip plastic clip into the door handle. Connect electrical plug connections -8, 9- .
6	Installing door trim panel	The clips -13, 14- must be replaced every time the door trim panel is removed. Position the door trim panel on the door and clip it in.
7		Position fastening screws -5- in the door trim panel and tighten. Tightening torque: -5.9 Nm (4.5 ftlb.)- Press in plastic cover. Make sure the logo can be read in the correct direction.
8	Installing cover	Screw in the fastening screws -2, 3, 4- and tighten. Clip in the cover -1- on the door handle.

Additional assembly notes on bowden cable variant A and inner door handle

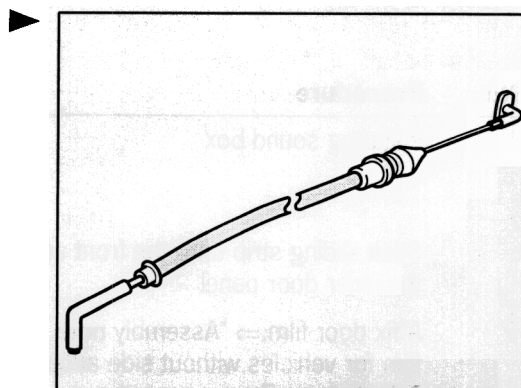
Bowden cables of variant A and inner door handles of variant A can only be installed together.

Up to Veh. Ident. Nos. Bowden cable variant A



Note!

- ◆ Bowden cable variant A is installed in vehicles up to the following Veh. Ident. Nos.:
- ◆ 99 ZXS 60 0957 RoW
- ◆ 99 ZXS 60 0512 RoW
- ◆ 99 9XS 60 3889 USA
- ◆ 99 1XS 60 2307 USA

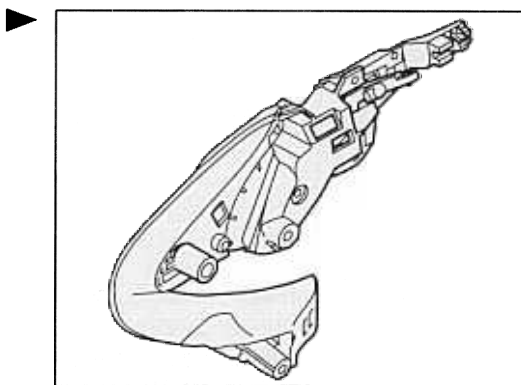


Up to Veh. Ident. Nos. Inner door handle variant A



Note!

- ◆ Inner door handle variant A is installed in vehicles up to the following Veh. Ident. Nos.:
- ◆ 99 ZXS 60 0957 RoW
- ◆ 99 ZXS 60 0512 RoW
- ◆ 99 9XS 60 3889 USA
- ◆ 99 1XS 60 2307 USA

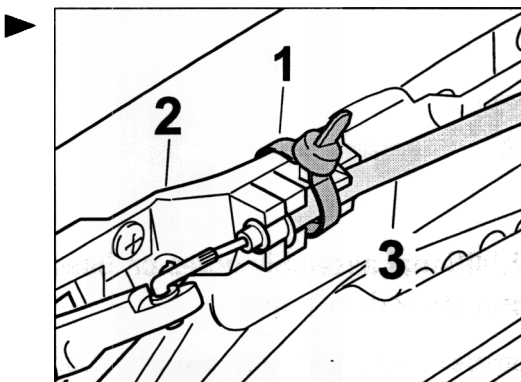


Removal and installation of bowden cable variant A

Cut open tie-wrap -1- when removing the door trim panel.

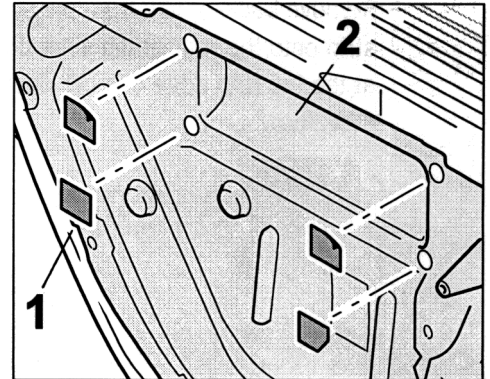
Unclip bowden cable from the door handle.

- 1 - Engage bowden cable in the door handle. The bowden cable must always be set free of play. When installing the door panel, secure with a tie-wrap -1- around the door handle -2- and the bowden cable -1-.
- ⇒ Rep. Gr. 573719; Removing and installing inner door release (bowden cable) for door lock



Assembly note on door film for vehicles without side airbag

The spare door film comes with 4 holes for fastening the side airbag. For vehicles without airbag, the holes in the door film -2- must be covered with commercially available adhesive tape -1-

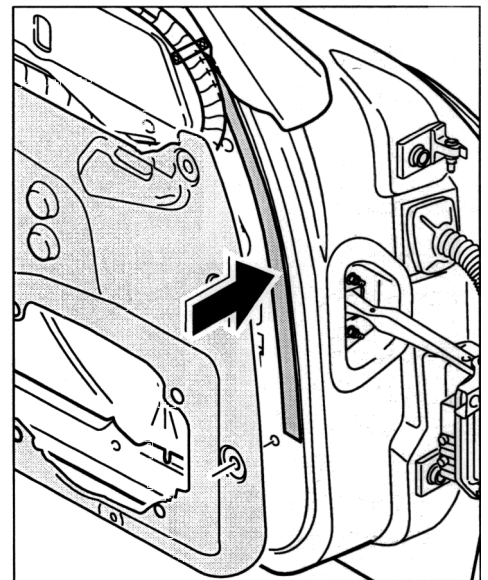


Fitting sliding strip on the inner door panel

A sliding strip must be stuck onto the front and rear sides of the inner door panel in order to prevent creaking noises from the door area.

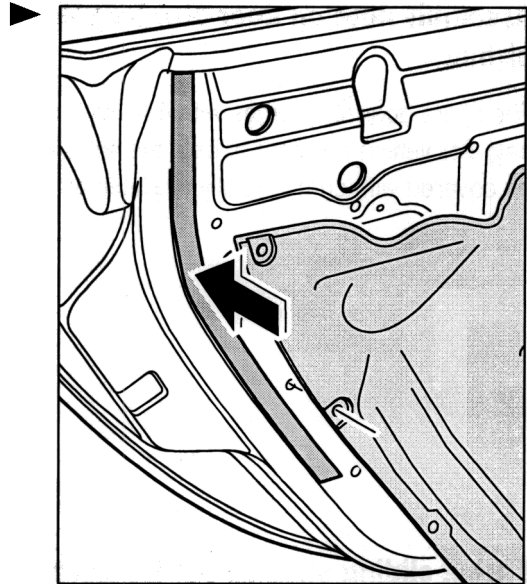
1 - Sticking sliding strip onto the front of the inner door panel

- Remove backing film from the sliding strip and stick the strip onto the front of the inner door panel -**arrow**-. Start at the top (top edge of inner door panel) and follow the curvature.

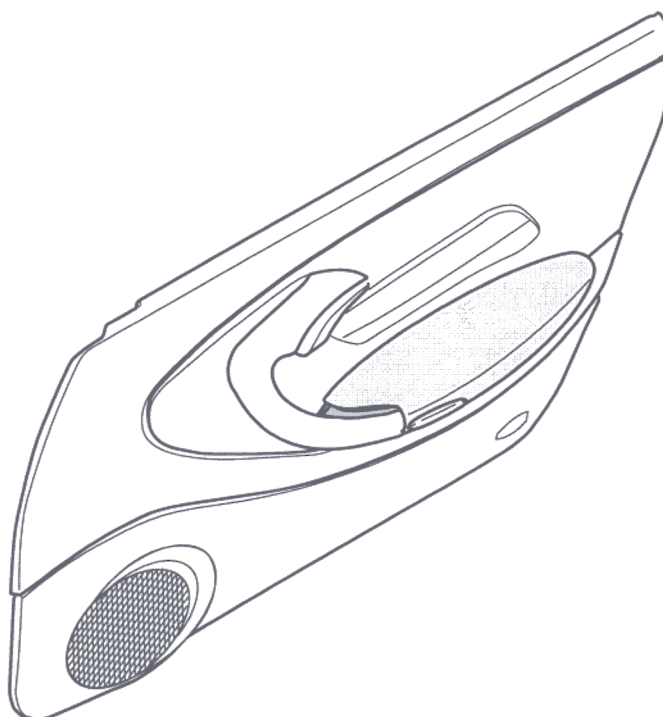


1 - Sticking sliding strip onto the rear of the inner door panel

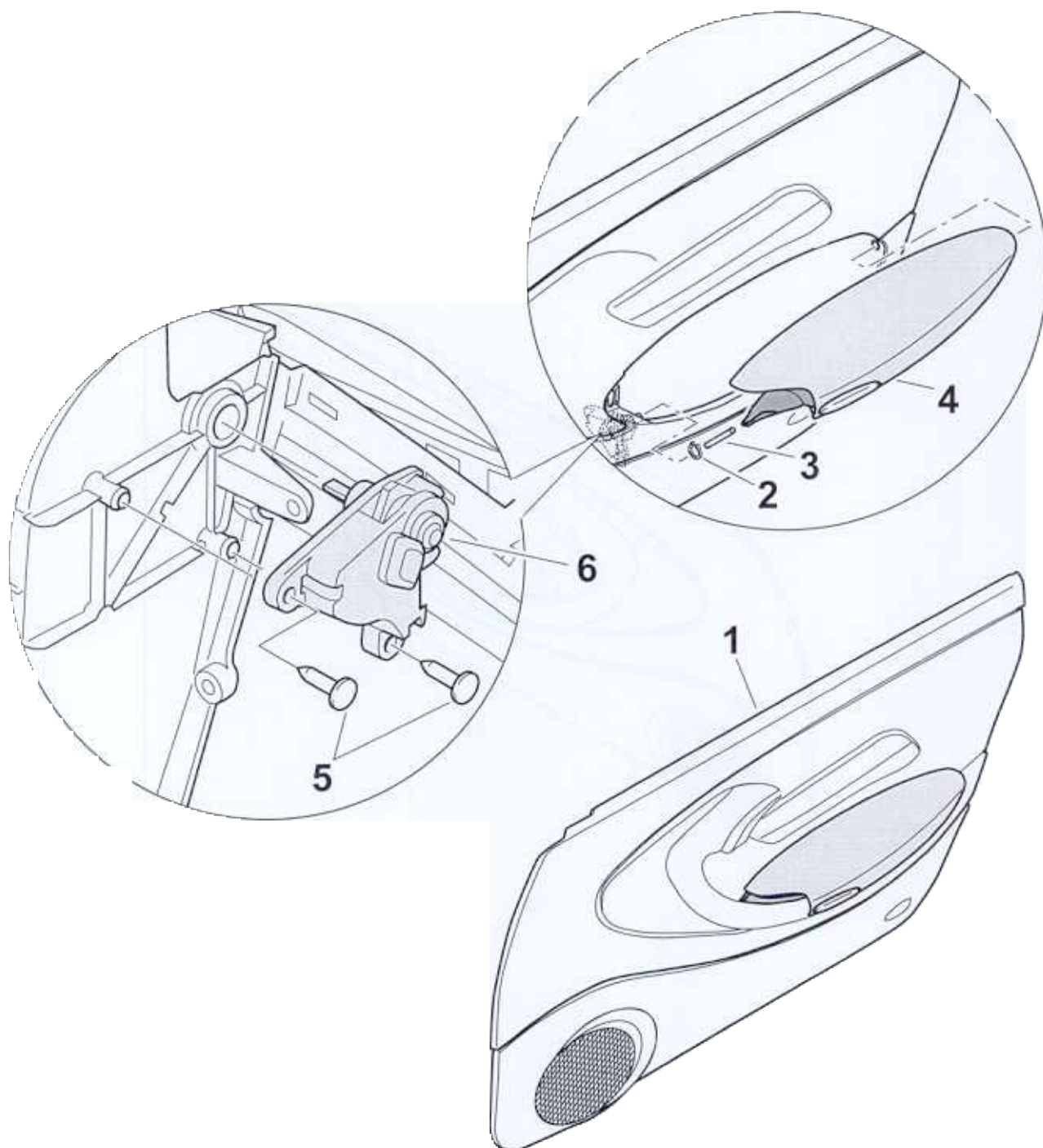
- Remove backing film from the sliding strip and stick the strip onto the rear of the inner door panel **-arrow-**. Start at the top (top edge of inner door panel) and follow the curvature.



Removing and installing oddments compartment lid

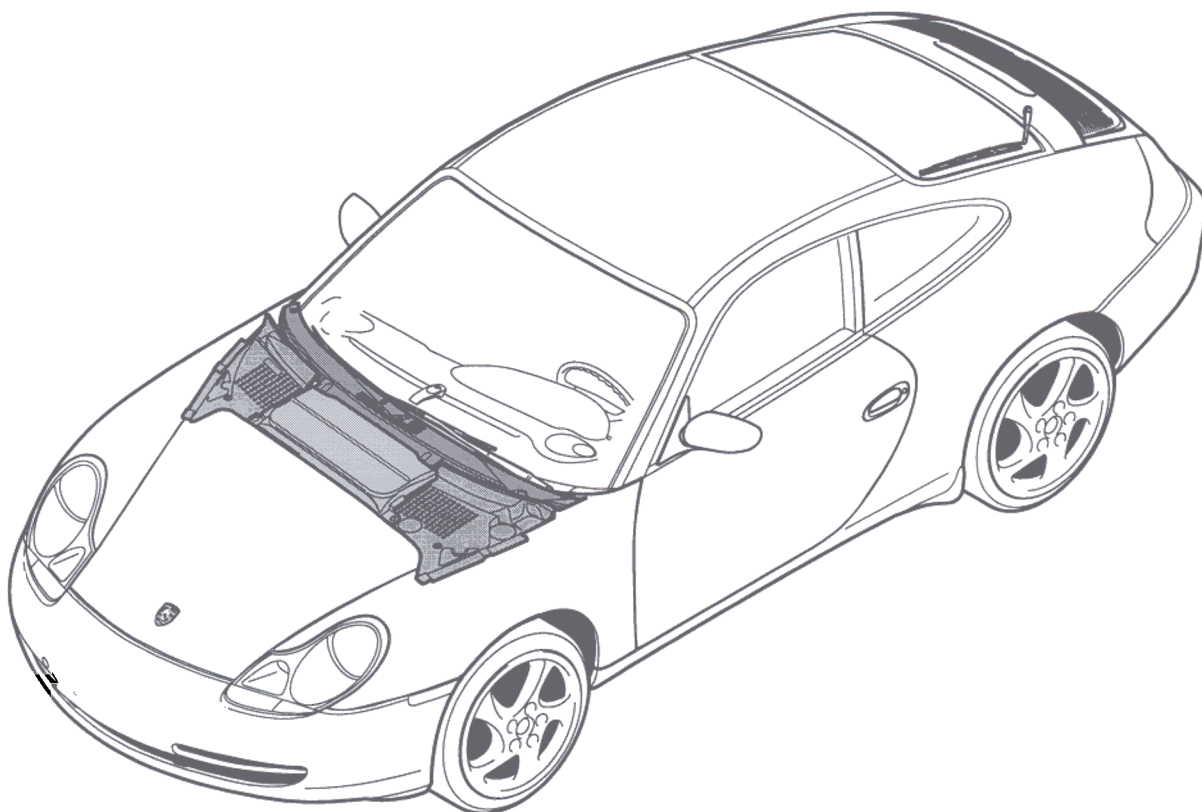


Removing and installing oddments compartment lid



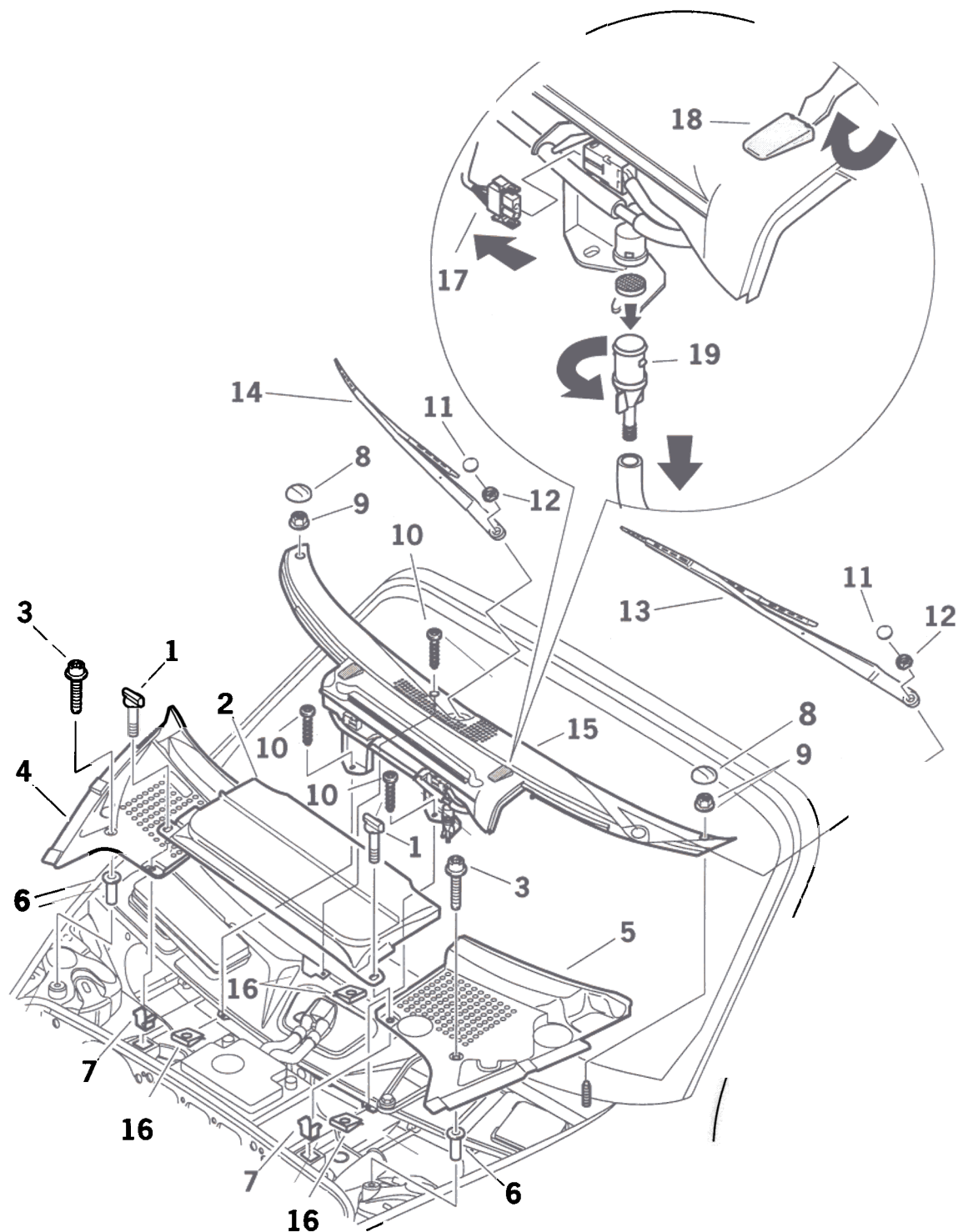
No.	Designation	Qty.	Removal	Installation
1	Door trim panel			
2	Snap ring 11 x 1	1	Remove the snap ring -2- with a snap ring pliers.	Put the snap ring onto the shaft with a snap ring pliers -3- .
3	Shaft	1	Pull the shaft -3- out of the guide mechanism -6- and the lid -4- .	Position lid -4- in the door panel -1- and guide mechanism -6- , and push in shaft -3- until it engages at the groove.
4	Lid for oddments compartment	1	To remove lid for oddments compartment -4- , see: (Item 3)	
5	Oval-head screw 4.2 x 14	2		
6	Guide mechanism	1	Undo sheetmetal screws -5- B 4.2 x 14 on the rear side of the door trim panel.	Position the guide mechanism -6- on the rear side of the door panel and tighten with the sheetmetal screws -5- B 4.2 x 14.

70 22 19 Removing and installing cowl panel cover



682_97

Removing and installing cowl panel cover



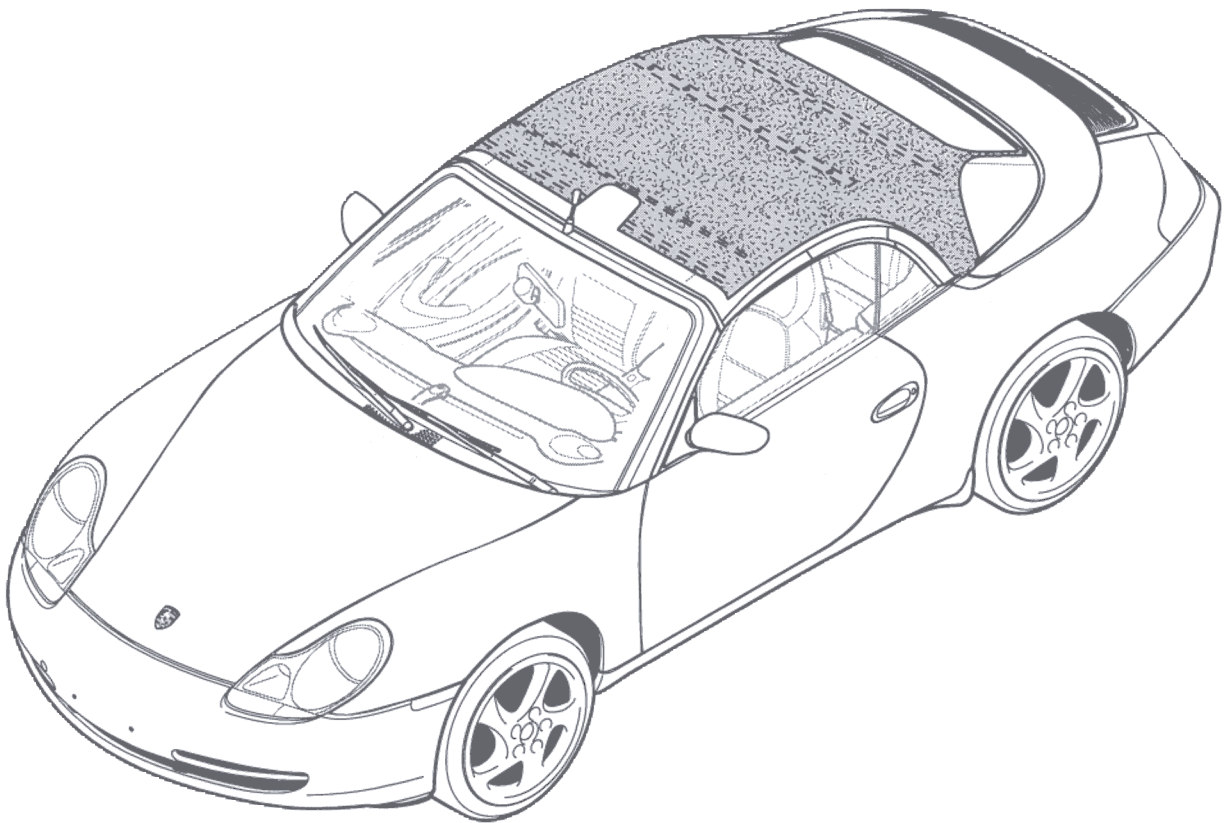
683_97

Removing and installing front cowl panel cover

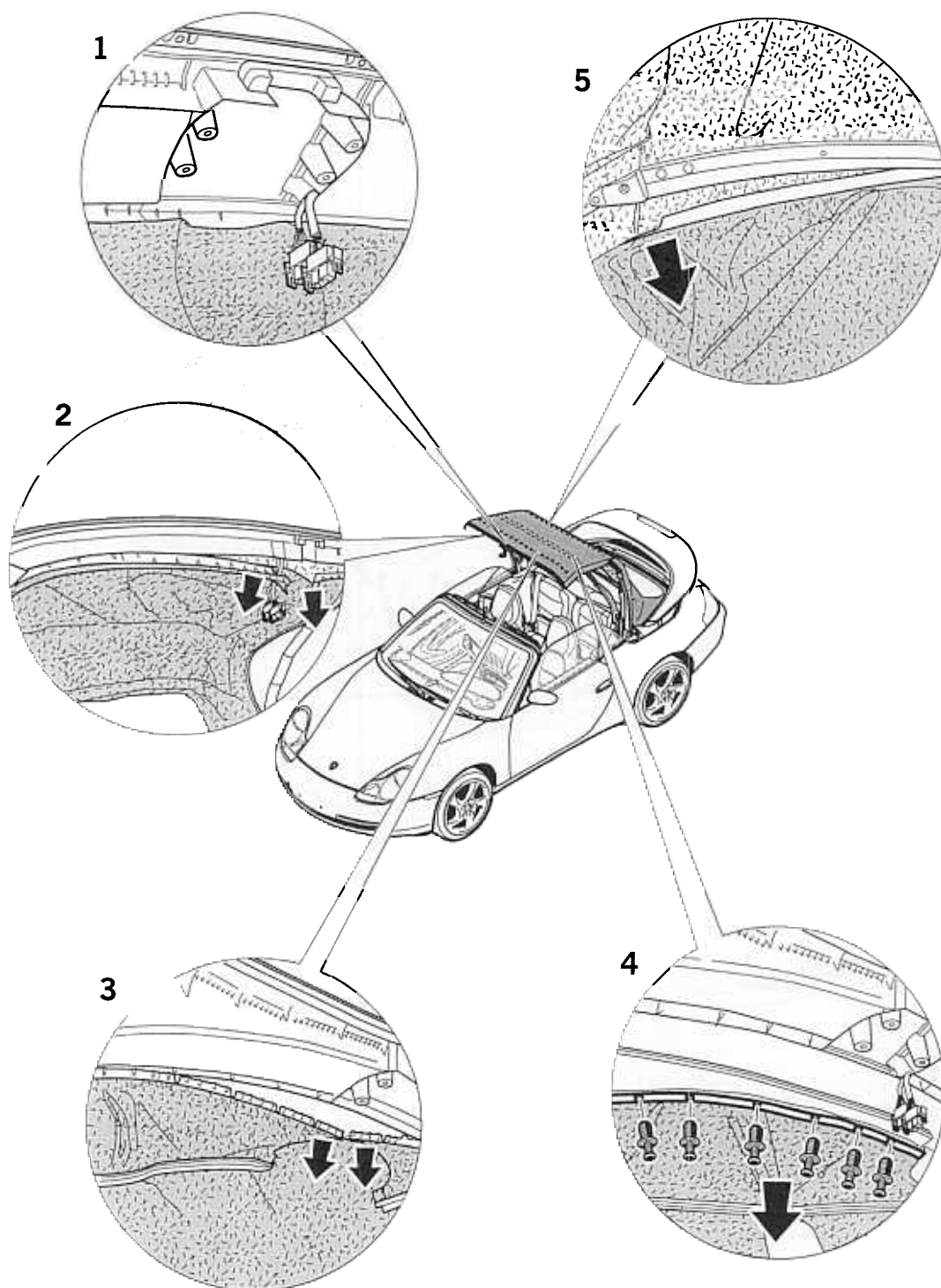
No.	Designation	Qty.	Removal	Note:	
				Installation	
1	Twist lock	2			
2	Battery cover	1			
3	Torx screw T25 M5 x 30	2			
4	Radiator tank cover, right	1			
5	Radiator tank cover, left	1			
6	Dummy press-in nut	2			
7	Cam	2	Unclip	Clip in	
8	Cap	2	Position and press in	With a small screwdriver	
9	T5 plastic nut	2		Check, replace if necessary	
10	Torx screw T20 x 20	3			
11	Cover	2			
12	Nut	2	Undo	Tightening torque: 17 Nm (12.5 ftlb.)	
13	Left wiper arm	1			
14	Right wiper arm				
15	Cowl panel cover	1			
16	Sheetmetal nut B4.8	3		Adjust to center of hole.	
17	Electrical plug connection	2	Press locking tabs together and separate electrical plug connection.	Connect electrical plug connection.	

No.	Designation	Qty.	Removal	Note:	Installation
18	Spray nozzle	2	Use a screwdriver to lift the spray nozzle at the front edge. Pull off water hose.		Push on water hose and press spray nozzle into the cowl panel cover.
19	T-piece (filter element)	1	Twist and pull off. Remove filter element.		Clean filter element if necessary.

70 84 19 Removing and installing roof lining – cabriolet



115_98

Removing roof lining – cabriolet

116_1_98

Removing roof lining – cabriolet**Note****Convertible top in service position**

Observe the procedure described below in order to avoid **damage or destruction** of the tension bow seal.

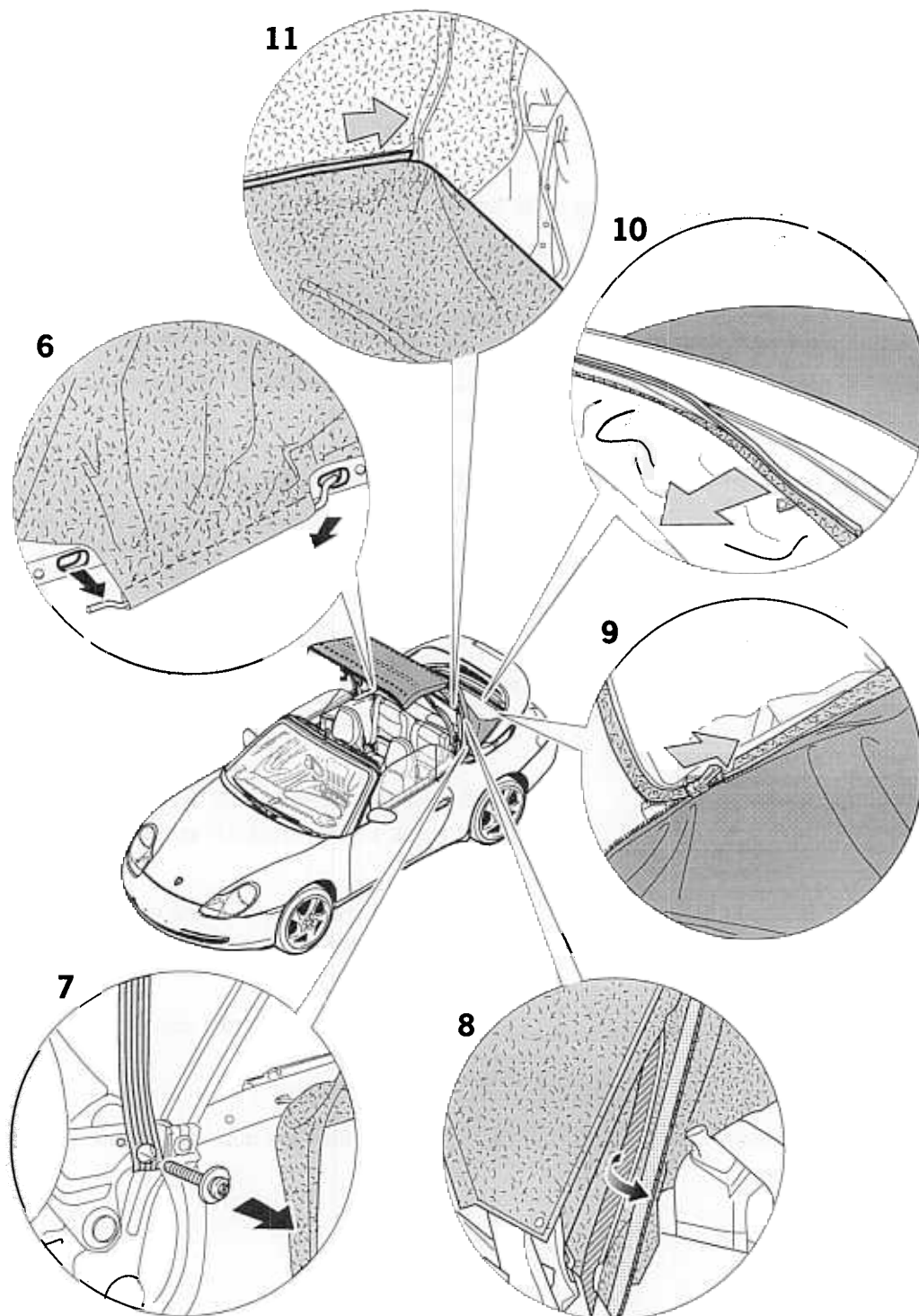
Move convertible top rearward by means of the electric motor until the convertible-top compartment lid has reached the rear limit position.

Move convertible top forward by means of the electric motor until the convertible-top compartment lid moves forward. Then interrupt closing operation. Disengage left and right tension cables and fold up the tension bow.

The convertible top must no longer be electrically operated in this position.

No.	Procedure	Instructions
	Removing convertible-top latch	Undo T30 x 16 Torx screws, remove convertible-top latch and disconnect electrical plug connection.
2	Detaching headliner at front of roof frame 1	Pull off sewn-on clamping rail of the headliner on roof frame 1 at the front left and right.
3	Detaching headliner at centre of roof frame 1	Pull off sewn-on clamping rail of the headliner on roof frame 1 at the center on the left and right.
4	Detaching headliner at rear of roof frame 1	Unscrew expanding nut from the covering strip and roof frame 1 at rear.
5	Detaching headliner at the main bow	Pull headliner rail from the main bow on the left and right.

Removing roof lining – cabriolet

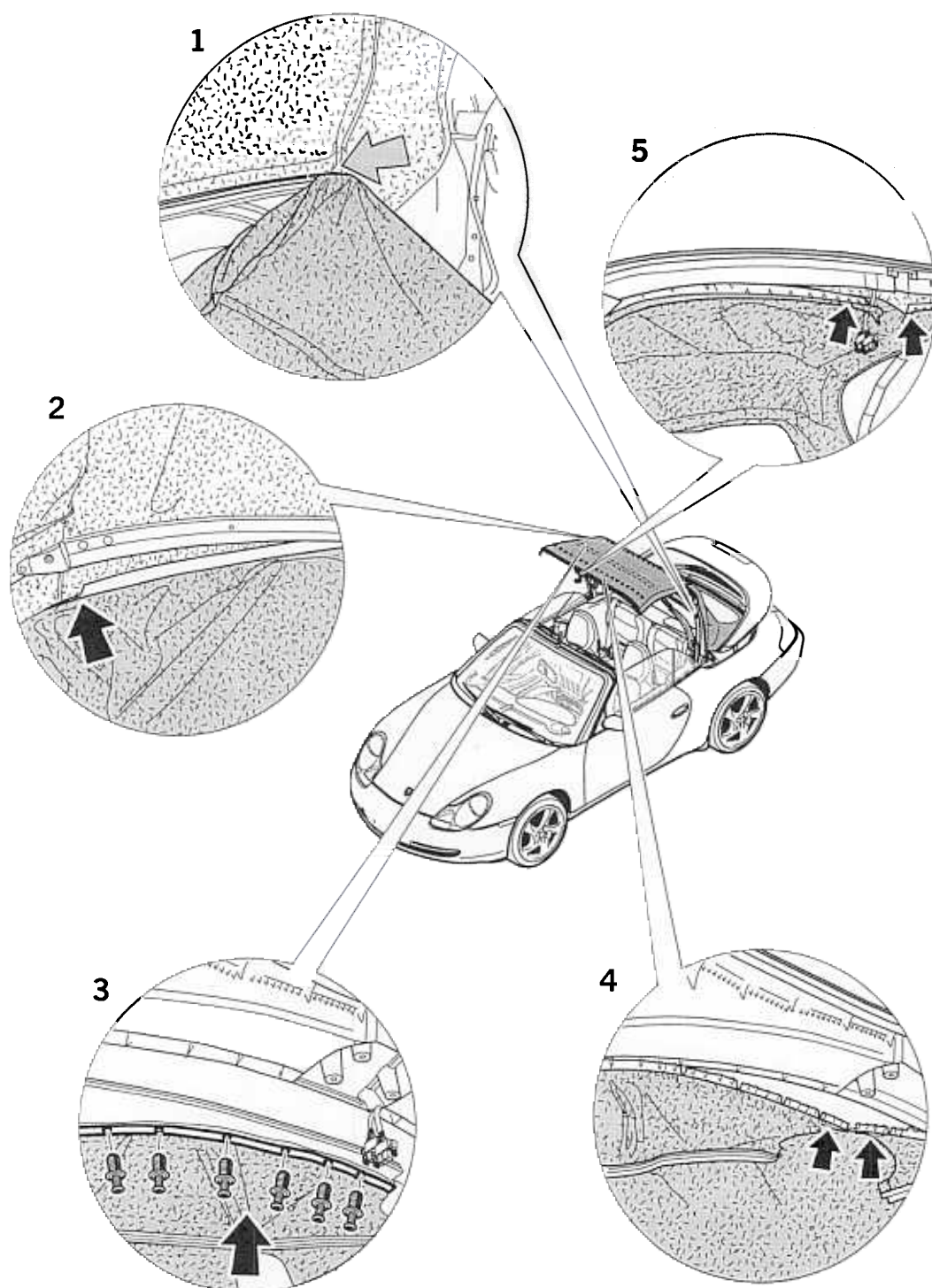


116_2_98

Removing roof lining – cabriolet

No.	Procedure	Instructions
6	Disengaging brace on the tension bow	Press brace rearward and pull it out of the tension bow.
7	Detaching holding strap	Undo T15 x 10 Torx screw from the holding strap of the headliner on the right and left.
8	Detaching Velcro fastening	Pull off Velcro fastening of the headliner from the corner bow on the left and right.
9	Opening zip fastener	Separate zip fastener of the headliner from the rear window by unzipping.
10	Disengaging headliner	Pull headliner out of the groove of the tension bow.
11	Pulling out tightening strip	Pull the tightening strip of the headliner from the groove of the corner bow.

Installing roof lining – cabriolet

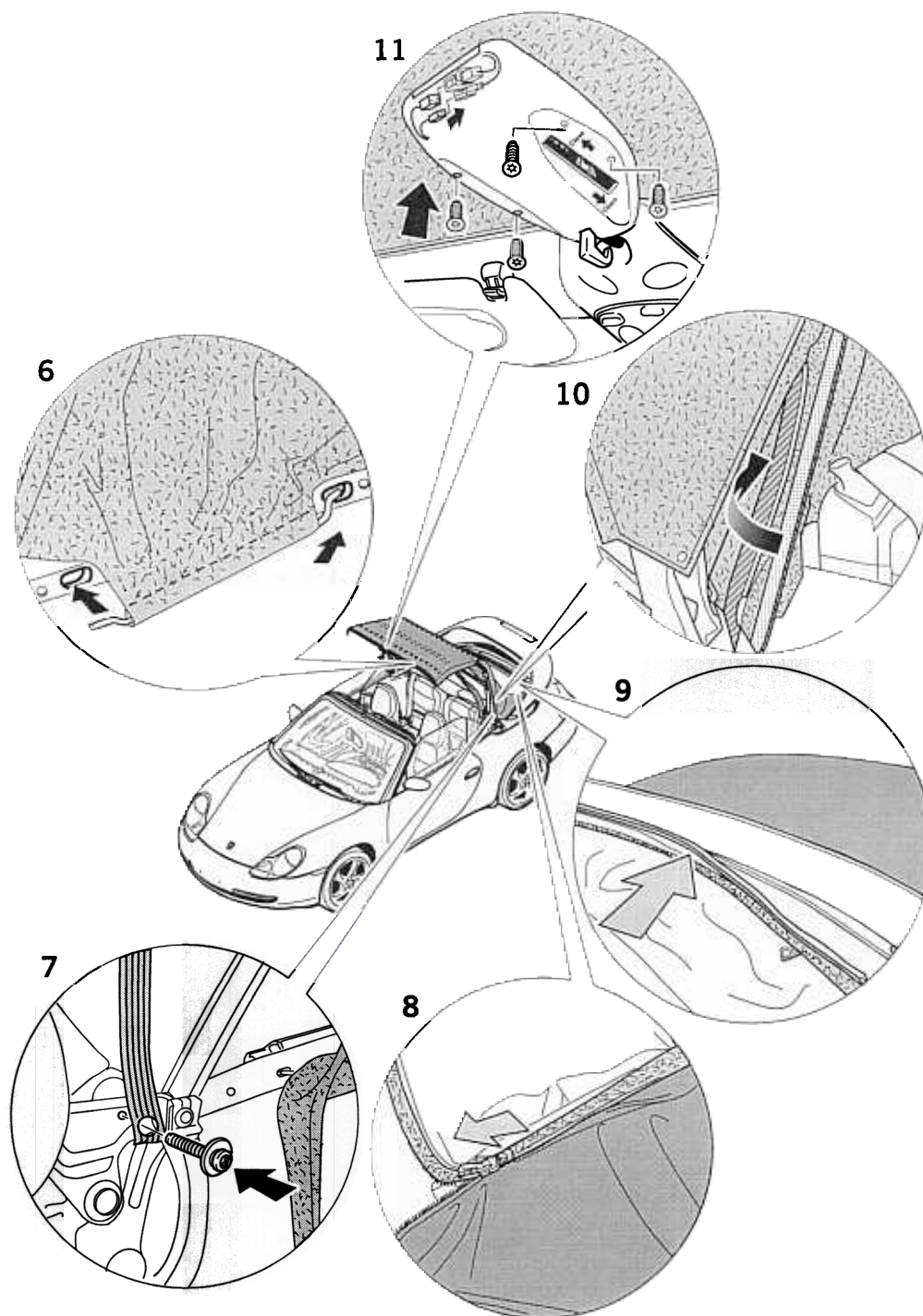


117_1_98

Installing roof lining – cabriolet

No.	Procedure	Instructions
1	Pulling in tightening strip	Insert tightening strip of the headliner into the groove of the corner bow.
2	Clipping headliner into the main bow	Clip headliner clamping rail into the main bow on the left and right.
3	Fitting headliner at rear of roof frame 1	Position covering strip of the headliner at the rear of roof frame 1 and press in with the expanding nuts.
4	Fitting headliner at centre of roof frame 1	Position sewn-on clamping rail of the headliner at centre of roof frame 1 and push on.
5	Fitting headliner at front of roof frame 1	Position sewn-on clamping rail of the headliner on roof frame 1 at the front left and right and press in.

Installing roof lining – cabriolet

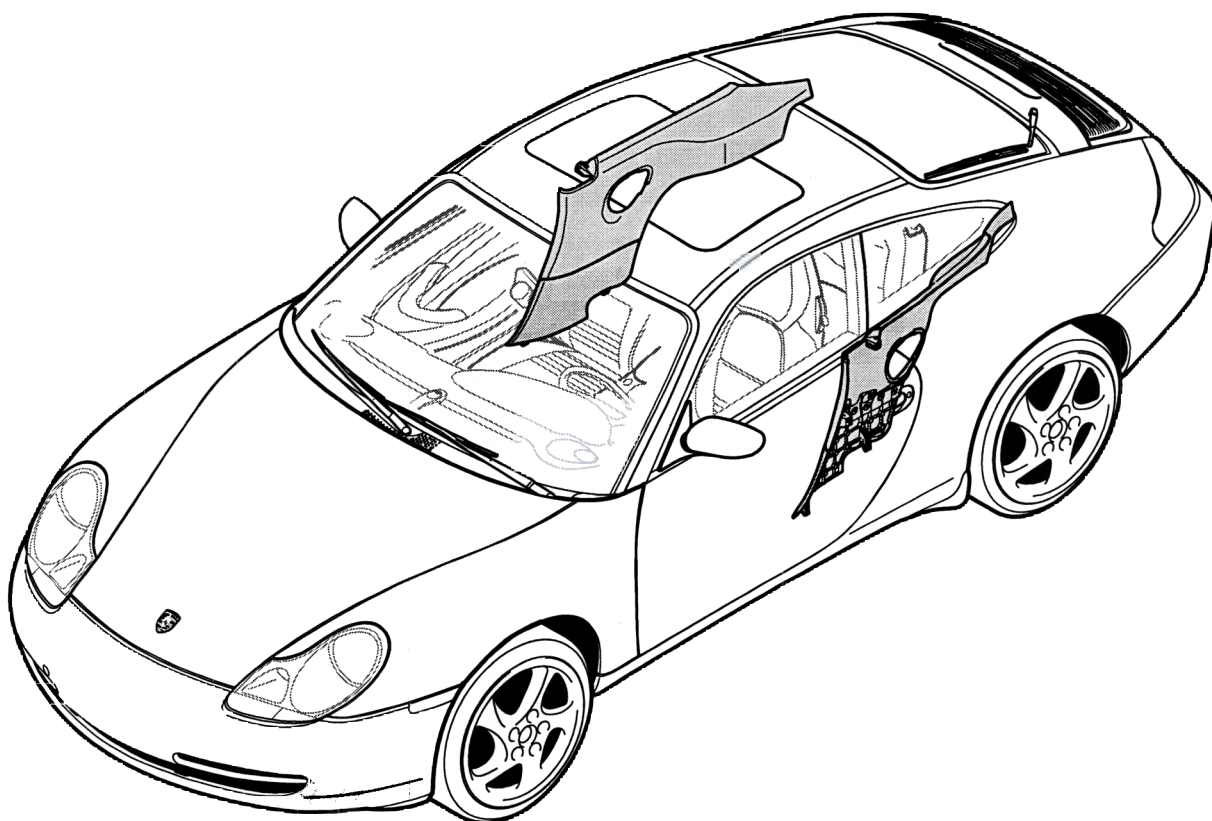


117_2_98

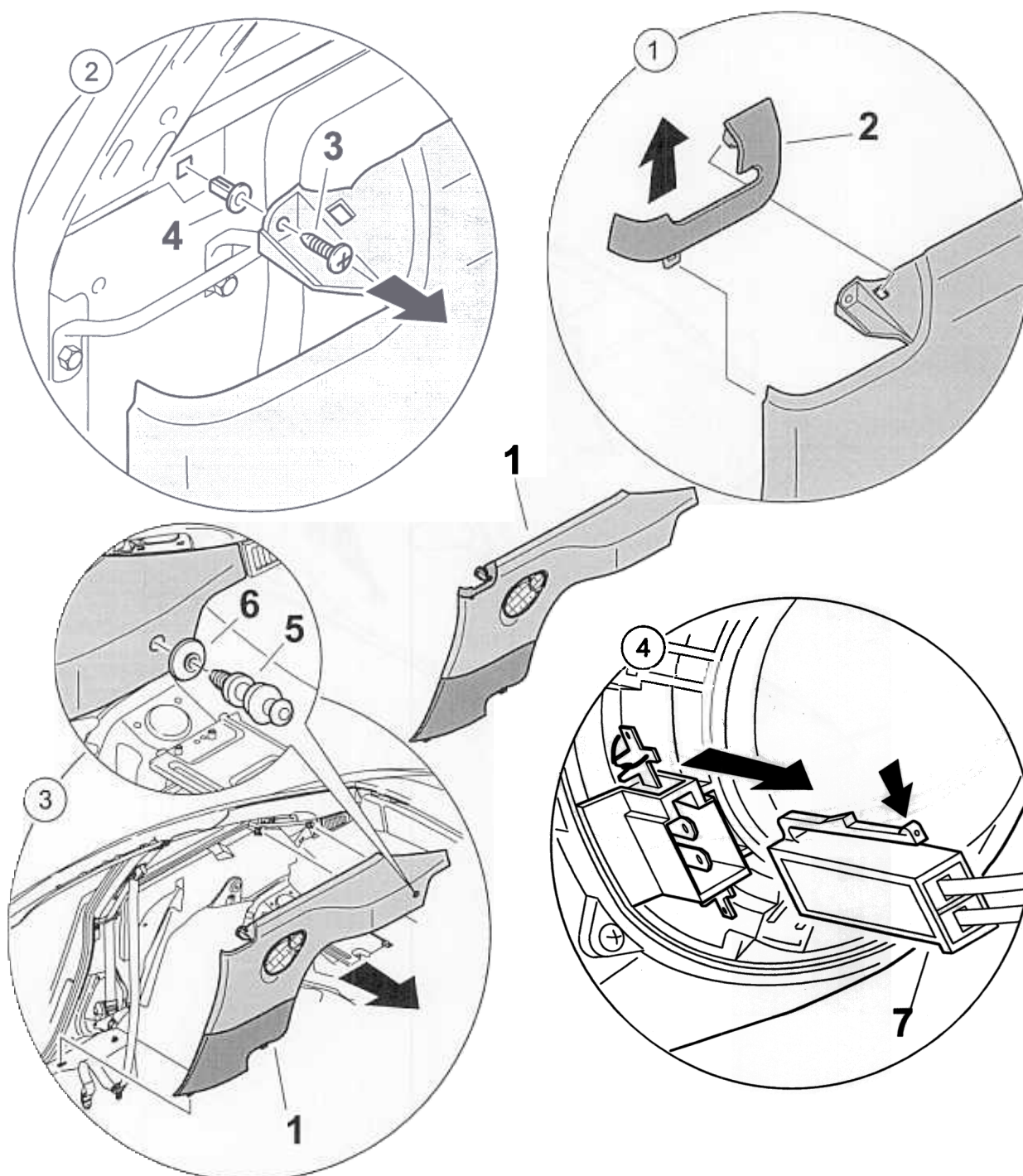
Installing roof lining – cabriolet

No.	Procedure	Instructions
6	Engage brace	Position brace in the tension bow at rear and then press rearward and insert into the front strap.
7	Fit holding strap	Position the holding strap on the main bow and fasten with the T15 x 10 Torx screw.
8	Close zip fastener	Join headliner to the rear window using the zip fastener.
9	Engage headliner	Press headliner into the groove of the tension bow.
10	Close Velcro fastener	Fasten headliner to the corner bow on the inside using the Velcro strip.
11	Install convertible-top latch	Plug in the electrical plug connection. Position convertible-top latch on front of roof frame 1, fasten with the T30 x 16 Torx screws and coat with high-strength screw locking compound . Tightening torque: 7 Nm (5 ftlb.)

Removing and installing side-panel lining

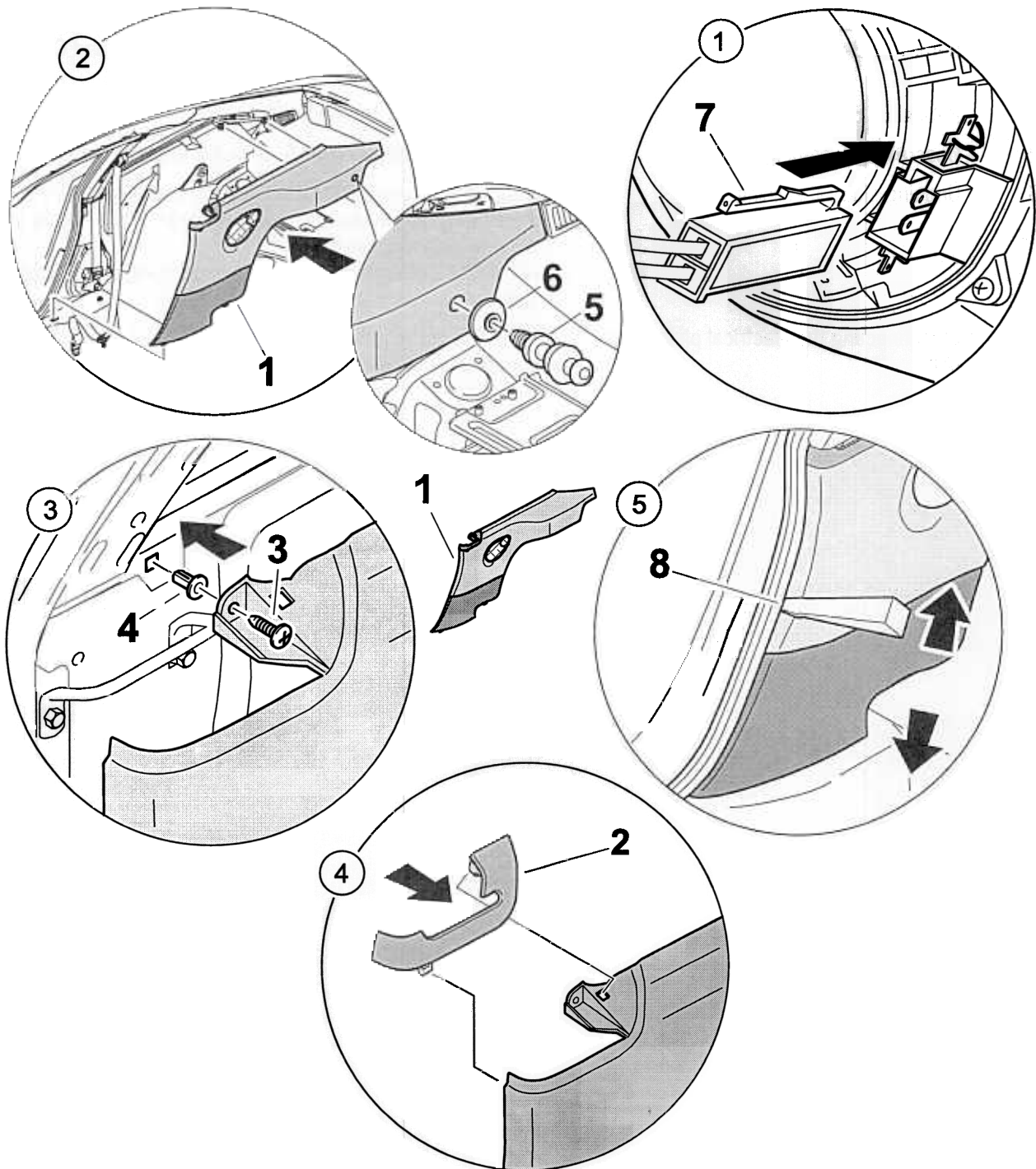


Removing side-panel lining



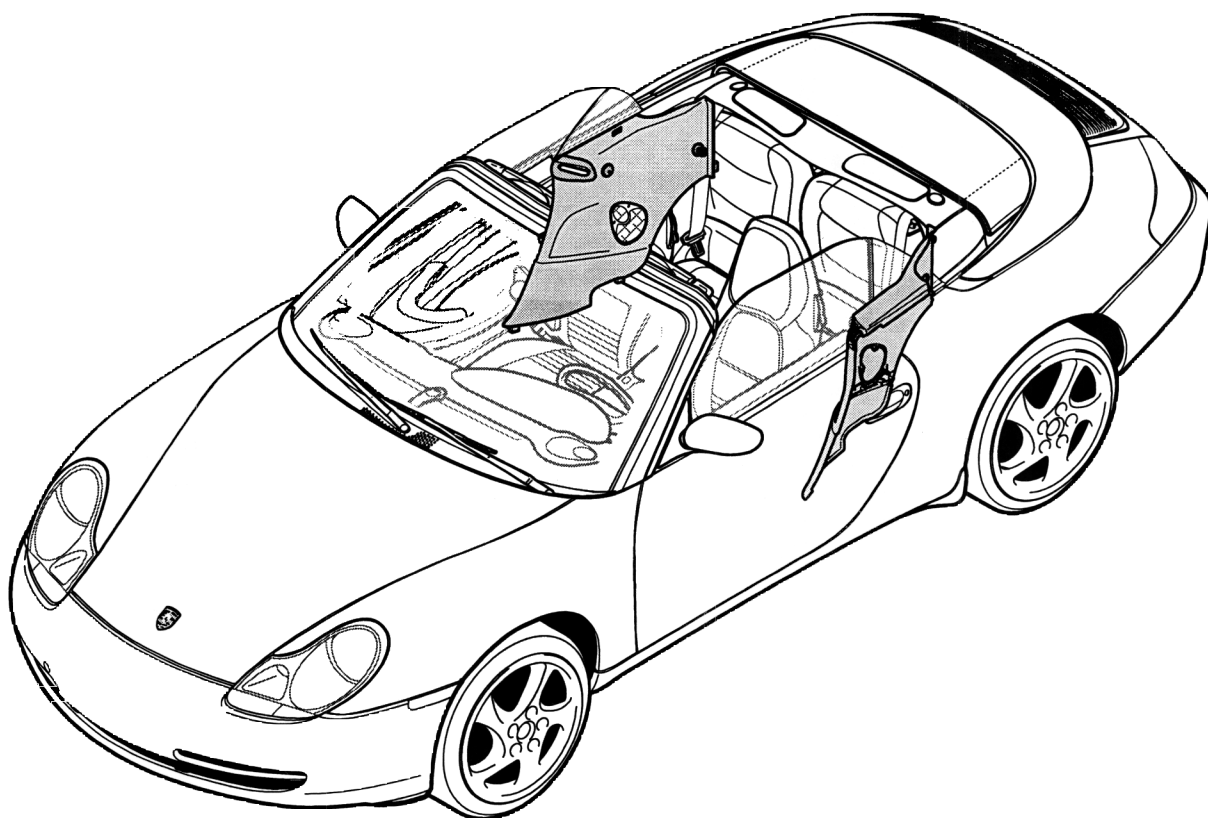
No.	Procedure	Instructions
		⇒ 70-51 "Removing and installing trim of A, B and C-pillars"
1	Pulling off cover	Pull cover -2- up and off -arrow- .
2	Unscrewing fastening screw.	Unscrew fastening screw -3- from the side-panel lining.
3	Undoing side-panel lining	Unscrew hexagon socket -5- . Remove cover trim -6- . Pull the locking tabs of the side-panel lining -1- out of the clip in the rear side section -arrow- . Lift up the locking tabs of the side-panel lining on the lower side member and pull out.
4	Disconnecting the electrical plug connections	Press the lug -small arrow- of the electrical plug connection for the loudspeaker -7- and separate.

Installing side-panel lining

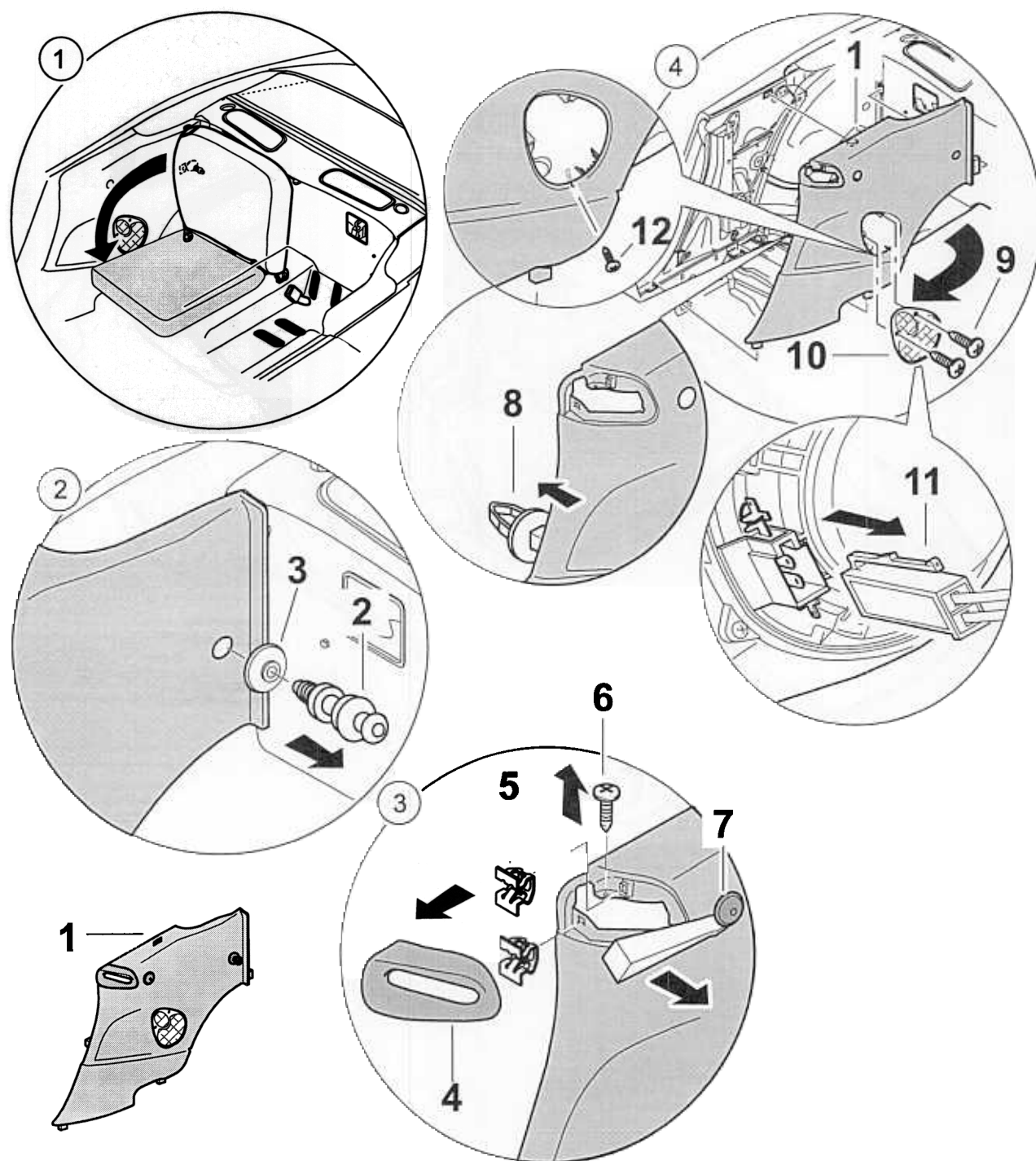


No.	Procedure	Instructions
	Connecting the electrical plug connections	Connect electrical plug connections- 5 -, locking tab of the electrical connection must engage.
2	Side-panel lining	Position the side-panel lining -1- on the inside of the rear side section and the inside of the lower side member and press the locking tabs into the clips.
3	Tightening fastening screw	Check or renew the plug-in nut- 4 - if necessary. Position and tighten fastening screw -3- in the side-panel lining.
4	Fitting cover	Position the locking tabs of the cover -2- on the side-panel lining -arrow- and press in.
5	Fitting seal	Lift up the pillar seal along the side-panel lining using a plastic spatula -arrow- .
	Installing B-pillar	⇒ 70-51 "Removing and installing trim of A, B and C-pillars"

Removing and installing side-panel lining cabriolet

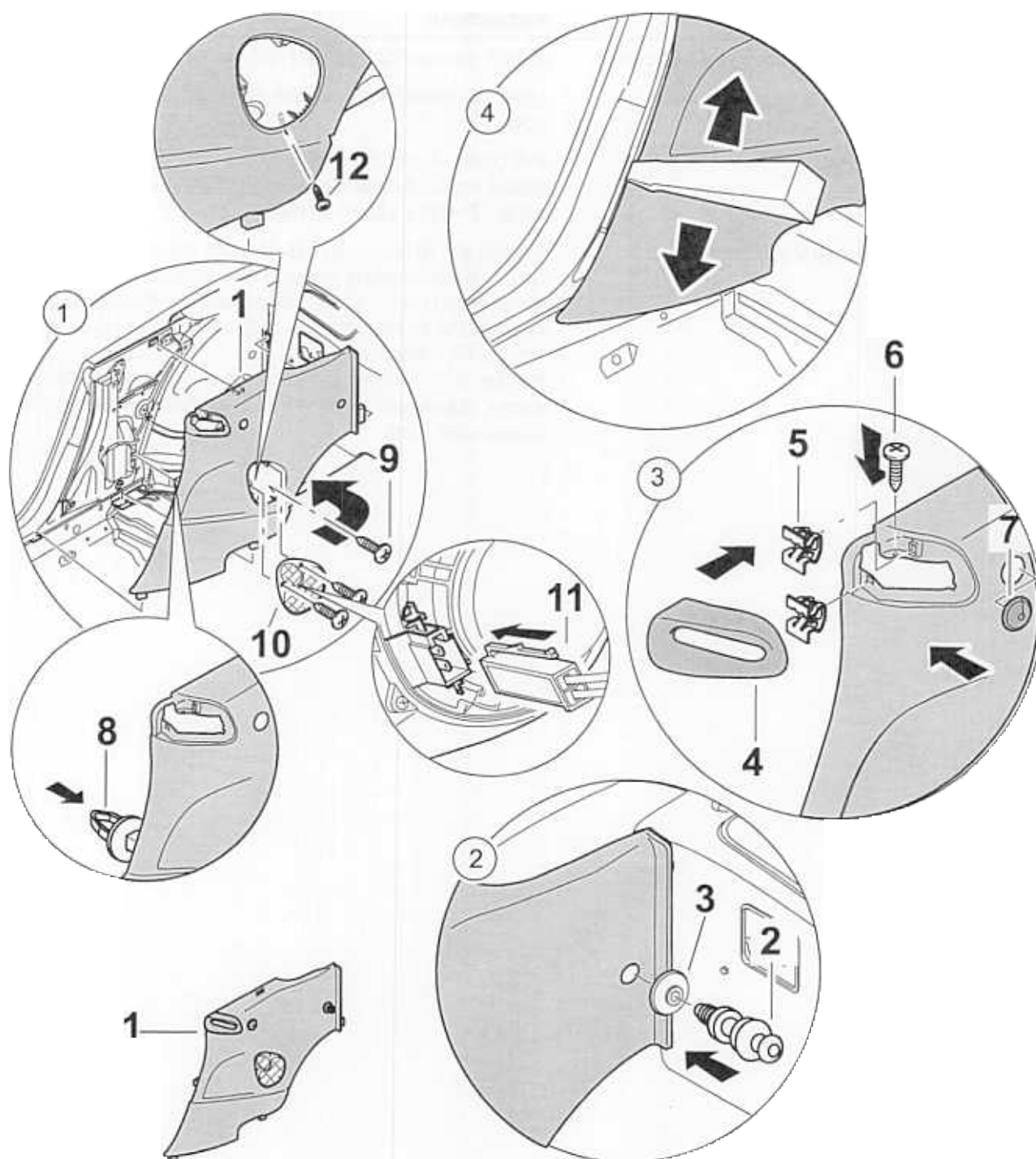


Removing side-panel lining



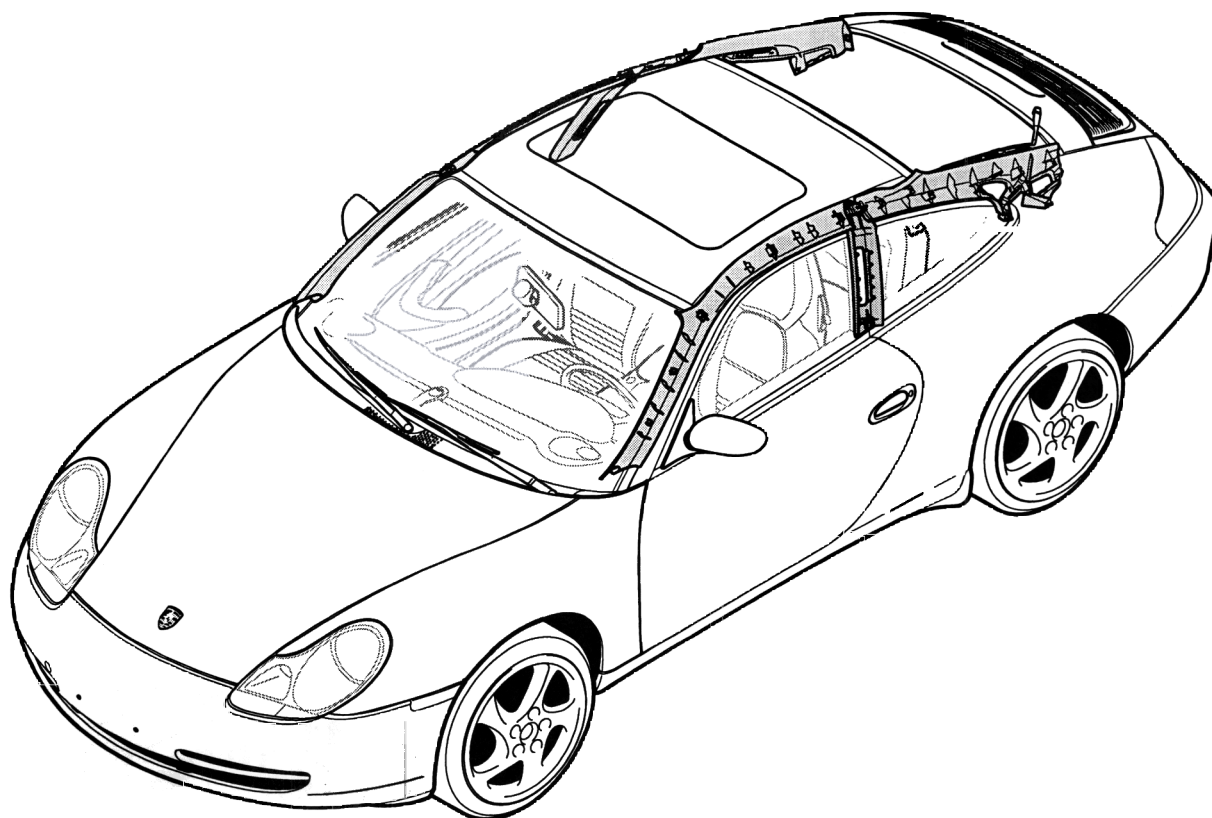
No.	Procedure	Instructions
	Folding over emergency seat backrest	Unlock emergency seat backrest and fold over.
2	Removing holding pegs and cover	Unscrew holding pegs -2- with Allen key St6. Remove cover -3- .
3	Pulling off cover	Pull cover -4- out of the clips to the front -5- . Unscrew fastening screw -6- from the side-panel lining -1- . Press out collar -7- with a plastic spatula.
4	Removing side-panel lining	Loosen the fastening screws -9- from the loudspeakers. Unscrew the fastening screw -12- underneath from the sheetmetal bracket of the side panels -1- . Press and disconnect the locking tab -11- of the electrical plug connection for the loudspeaker. Pull the side-panel lining -1- inwards until the clip -8- disengages. Subsequently lift the trim at the bottom and remove towards the front.

Installing side-panel lining

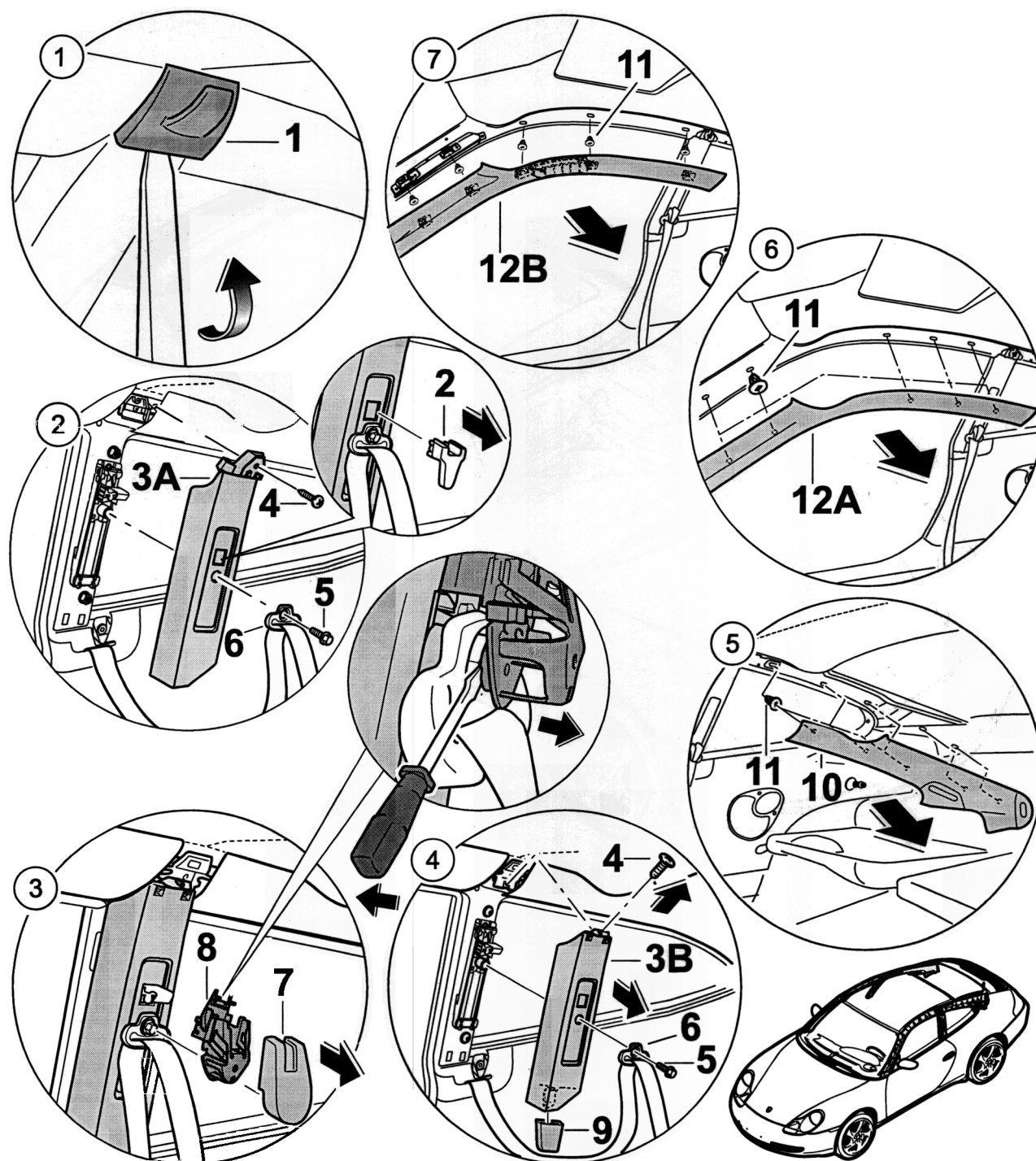


No.	Procedure	Instructions
	Mount the side-panel lining	<p>Insert pegs of the side-panel lining -1- on the inside of the rear side section and on the frame of the roll-over protection. Press clip -8- into the inside rear side section. Clip must engage audibly.</p> <p>Position fastening screw -12- into the sheetmetal bracket in the cut-out for the loudspeaker, and tighten. Plug in electrical plug connection -11- of loudspeakers. Position the loudspeaker in the side-panel -1- and fasten with the fastening screws -9-.</p>
2	Fitting holding pegs and cover	<p>Position the cover trim -3- and the holding peg -2- in the cut-out of the side-panel lining and screw in tightening torque 20 Nm (15.0 ftlb.)</p>
3	Fit cover	<p>Press in collar -7-, collar must engage audibly. Check the clips -5- or replace. Fasten the side-panel lining with the fastening screw -6-. Press the locking tabs of the cover -4- into the clips -5-.</p>
4	Fit seal	<p>Lift up the pillar seal along the side-panel lining using a plastic spatula -arrow-.</p>

Removing and installing trim of A, B and C-pillars



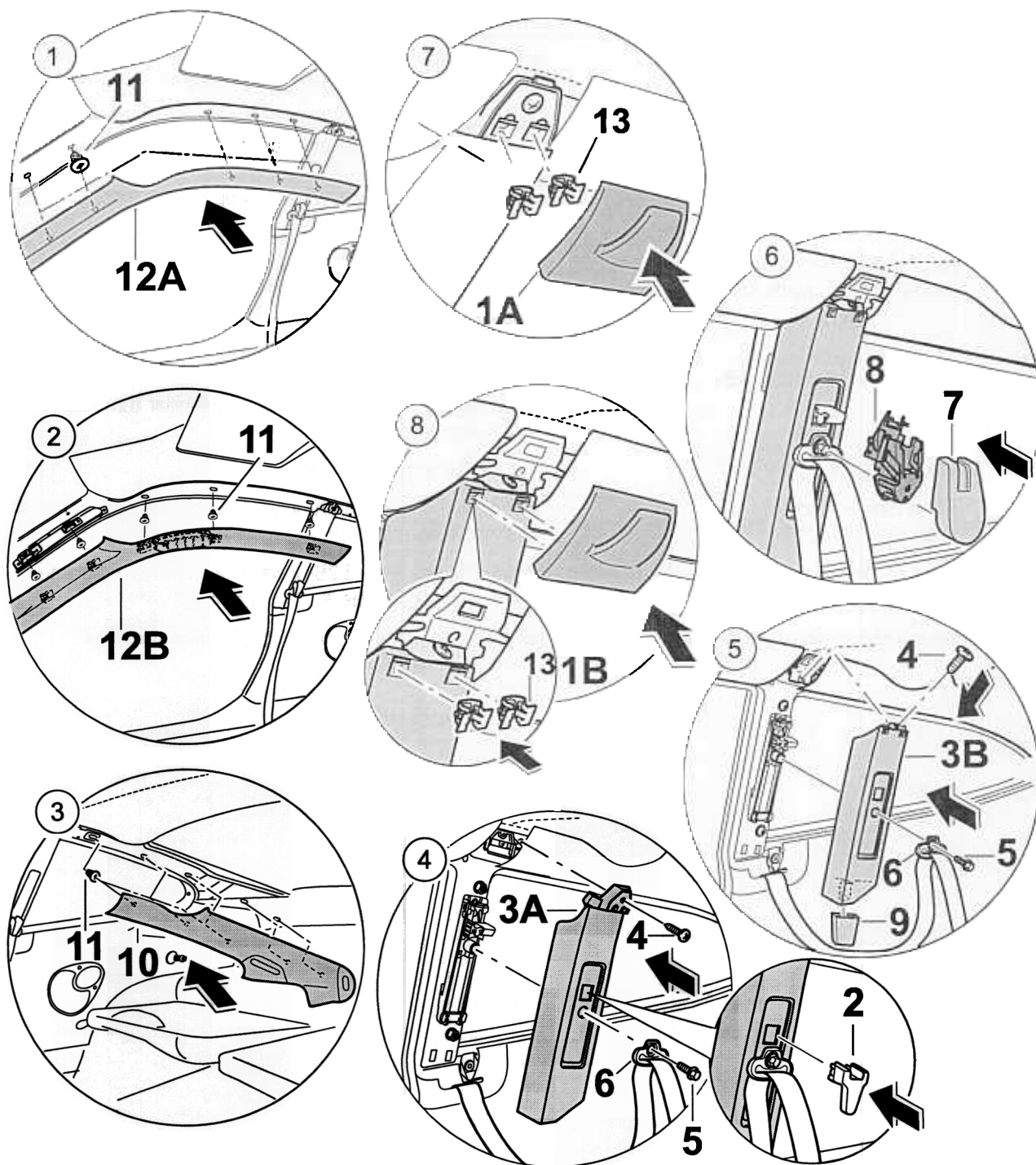
Removing and installing trim of A, B and C-pillars



No.	Procedure	Instructions
1	Unclipping clothes hook bracket	Lift up the clothes hook bracket -1- at the bottom with a plastic spatula and carefully pull up and off.
2	Up to model year 2000; removing the sash guide cover and the B-pillar trim -3A-	Carefully pull off the sash guide cover -2- . Unscrew the hexagon-head bolt -5- from the sash guide mount -6- . Unscrew fastening screw -4- . Lift up B-pillar trim -3A- and remove upwards.
3	As of model year 2000; pulling off sash guide cover	Carefully pull off the sash guide cover -7- . Press retaining bracket -8- out of the hexagon-head bolt -5- using a screwdriver.
4	As of model year 2000; removing B-pillar trim -3B-	Unscrew hexagon-head bolt -5- of the sash guide mount -6- . Unscrew fastening screw -4- . Lift up B-pillar trim -3B- and remove upwards.
5	Unclipping the C-pillar trim	Pull C-pillar trim -11- inwards.
6	Up to model year 2000; unclipping A-pillar trim -12A- .	Pull the A-pillar trim -12A- inwards along the roof frame and windscreen frame. ^{a)}
7	As of model year 2000; unclipping A-pillar trim -12B- .	Pull the A-pillar trim -12B- inwards along the roof frame and windscreen frame. ^{a)}

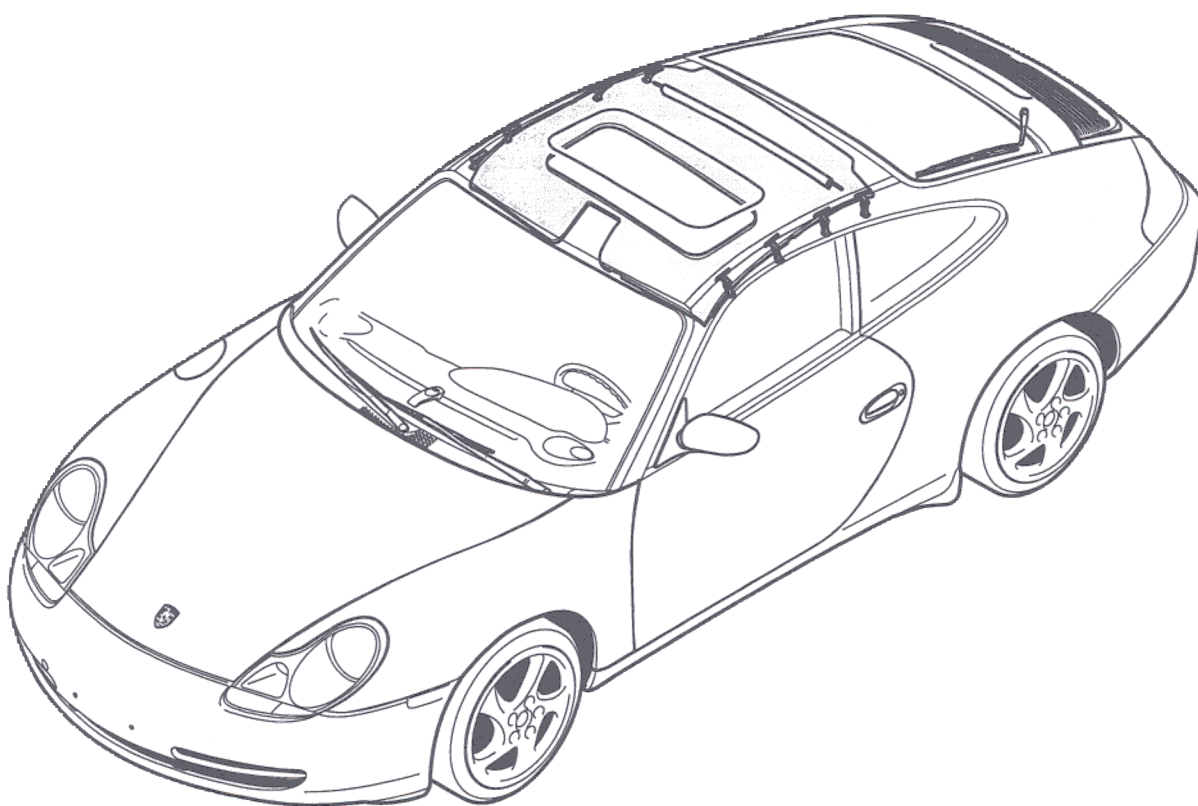
^{a)} The A-pillar trim as of model year 2000 is characterised by a changed curvature and the notch for the deformation element.

Installing trim of A, B and C-pillars



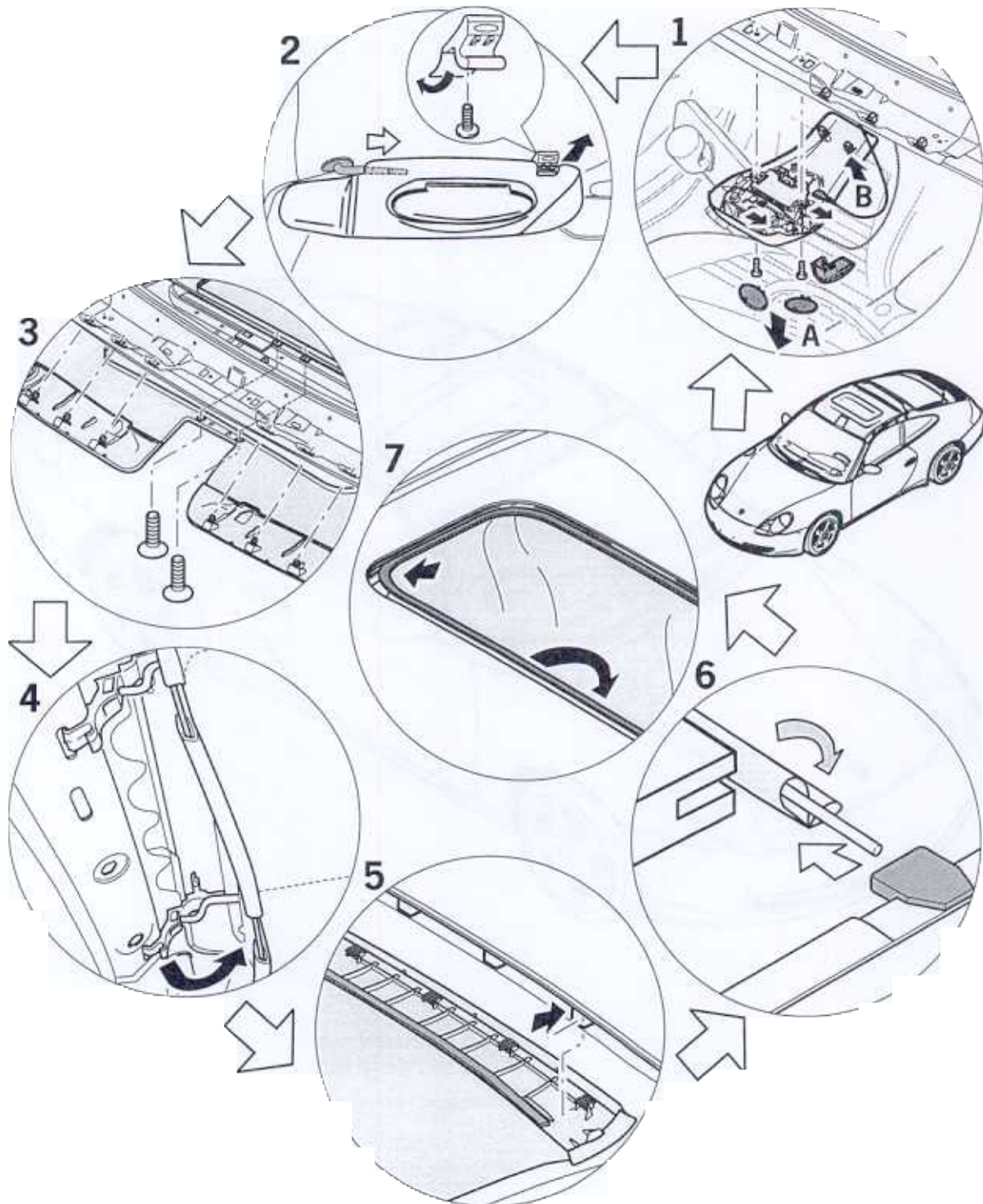
No.	Procedure	Instructions
		<p>Check or replace sheet metal clips -11-. Insert A-pillar trim at the side of the windscreen frame (transition point to dashboard), clip in the A-pillar trim -12A- along the roof frame.</p>
2	As of model year 2000; clipping in A-pillar trim	<p>Note: before installation, check that the deformation element is seated properly - A-. Check sheetmetal clips -11- and replace if necessary. Insert the A-pillar trim -12B- at the side of the windscreen frame (transition point to dashboard), clip in the A-pillar trim along the roof frame.</p>
3	Clipping in C-pillar trim	<p>Check sheetmetal clips -11- and replace if necessary. Position and clip in the C-pillar trim -10- on the C-pillar.</p>
4	Up to model year 2000; installing B-pillar trim -3A- and sash guide mount.	<p>Fasten the B-pillar trim -3A- with the fastening screw -4-. Position sash guide mount -6- on the B-pillar and fasten with the hexagon-head bolt -5-. Tightening torque: -50 Nm- (37 ftlb.).</p>
5	As of model year 2000; installing B-pillar trim -3B- and sash guide mount.	<p>Push sleeve -9- onto the lug of the B-pillar trim -3B- and insert in the bottom of the B-pillar. Fasten the B-pillar trim -3B- with the fastening screw -4-. Position sash guide mount -6- on the B-pillar and tighten with the hexagon-head bolt -5-. Tightening torque: -50 Nm- (37 ftlb.).</p>
6	Fitting the sash guide retaining bracket	<p>Press the peg of the retaining bracket -8- into the hexagon-head bolt bore -5-. Push the cover -7- onto the retaining bracket -4-.</p>
7	Up to model year 2000; pushing on the clothes hook bracket -1A-	<p>Check both sheetmetal clips -13- and replace if necessary. Carefully press clothes hook bracket -1A- into the sheetmetal clips -13- of the B-pillar trim -3A- at the bottom.</p>
8	As of model year 2000; pushing on the clothes hook bracket -1B-	<p>Check both sheetmetal clips -13- and replace if necessary. Carefully insert clothes hook bracket -1B- into the aluminium bracket at the top. Note: The clothes hook bracket -1B- must be inserted into the aluminium bracket without the use of force, otherwise the aluminium bracket is deformed. Carefully press the clothes hook bracket into the sheetmetal clips -13- of the B-pillar trim -3B- at the bottom.</p>

70 84 19 Removing and installing roof lining



535_98

Removing roof lining



536_98

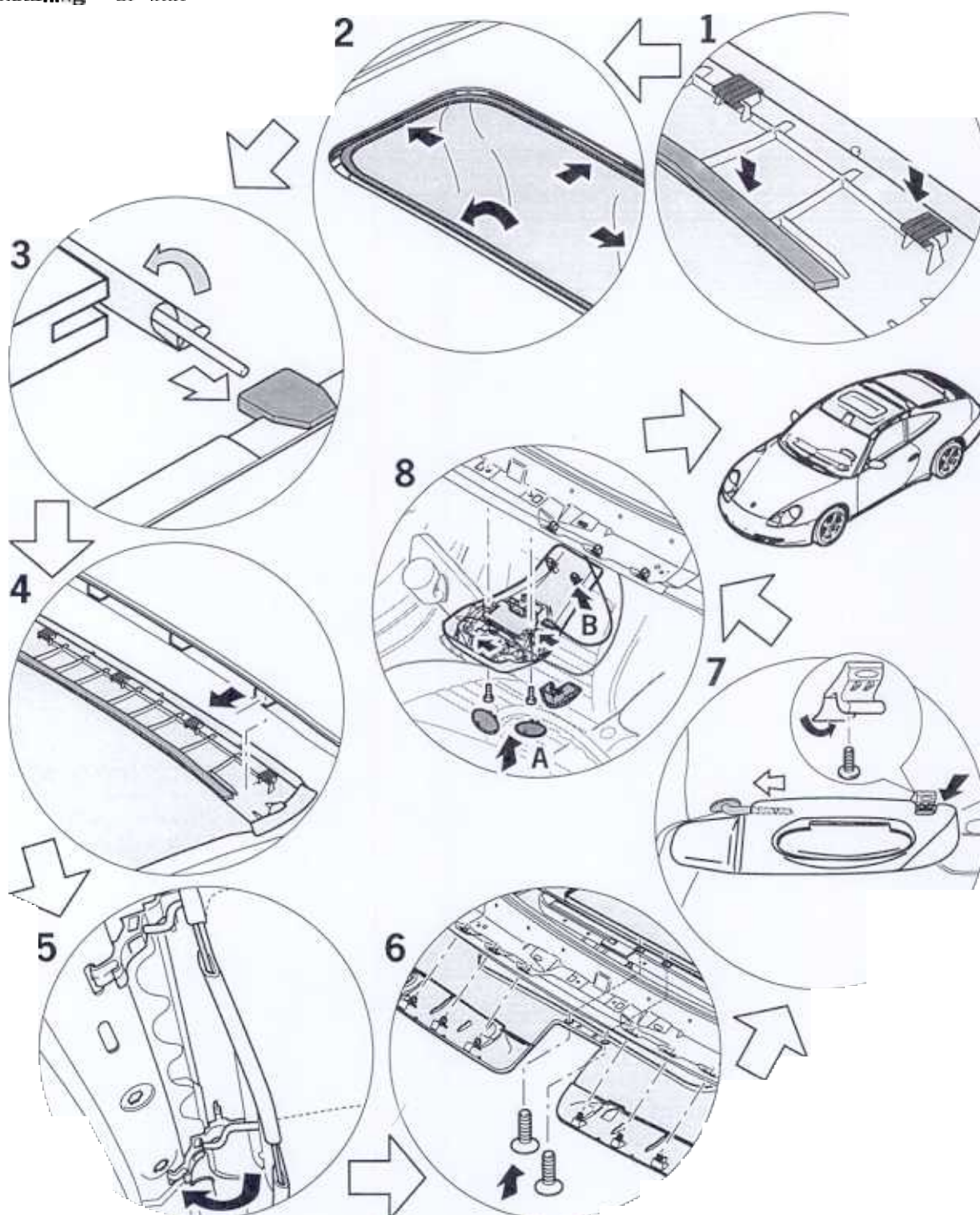
Removing roof lining

Before removing the roof lining, the trim of the A, B and C-pillars (Serv. No. 70 57) and the sliding roof panel (Serv. No. 60 40) must be removed.

No.	Procedure	Instructions
	Remove interior light cover	Using a small screwdriver, carefully unclip both cover lenses at the openings provided. Undo fastening screws M5 with a crosshead screwdriver (arrow A). Unclip cover at the rear left and right (arrow B), push forward towards the windscreen and remove. Disconnect the electrical plug connection of the sliding roof rocker switch and the interior light.
2	Remove sun visors and consoles	For removal of sun visors, refer to: Serv. No. 68 23 Insert a small screwdriver into the slot in the cover of the sun visor console and press out. Undo and remove the cross-recess screw beneath.
3	Unclip plastic trim at front	Undo the Torx screws M6 x 25 in the plastic trim at the front and unclip trim downwards on the left and right out of the wind cowl frame.
4	Detach roof liner at sides	Unclip the metal strut of the roof liner from the plastic clips on the right and left.
5	Detach plastic trim at rear	Pull the rear plastic trim out of the roof frame evenly on the left and right and detach.
6	Detach metal strut	Pull the middle of the metal strut incorporated in the fabric pocket downwards until it bends. Pull the metal strut out of the console on the left and right.

No.	Procedure	Instructions
7	Detach frame	Pull the frame of the sliding roof aperture at the front in the centre backwards or downwards, so that the frame overlaps less at the corners and can be pulled down and out. Then pull the roof frame diagonally across the sliding roof aperture inwards into the passenger compartment.

Installing of inin



Installing roof lining

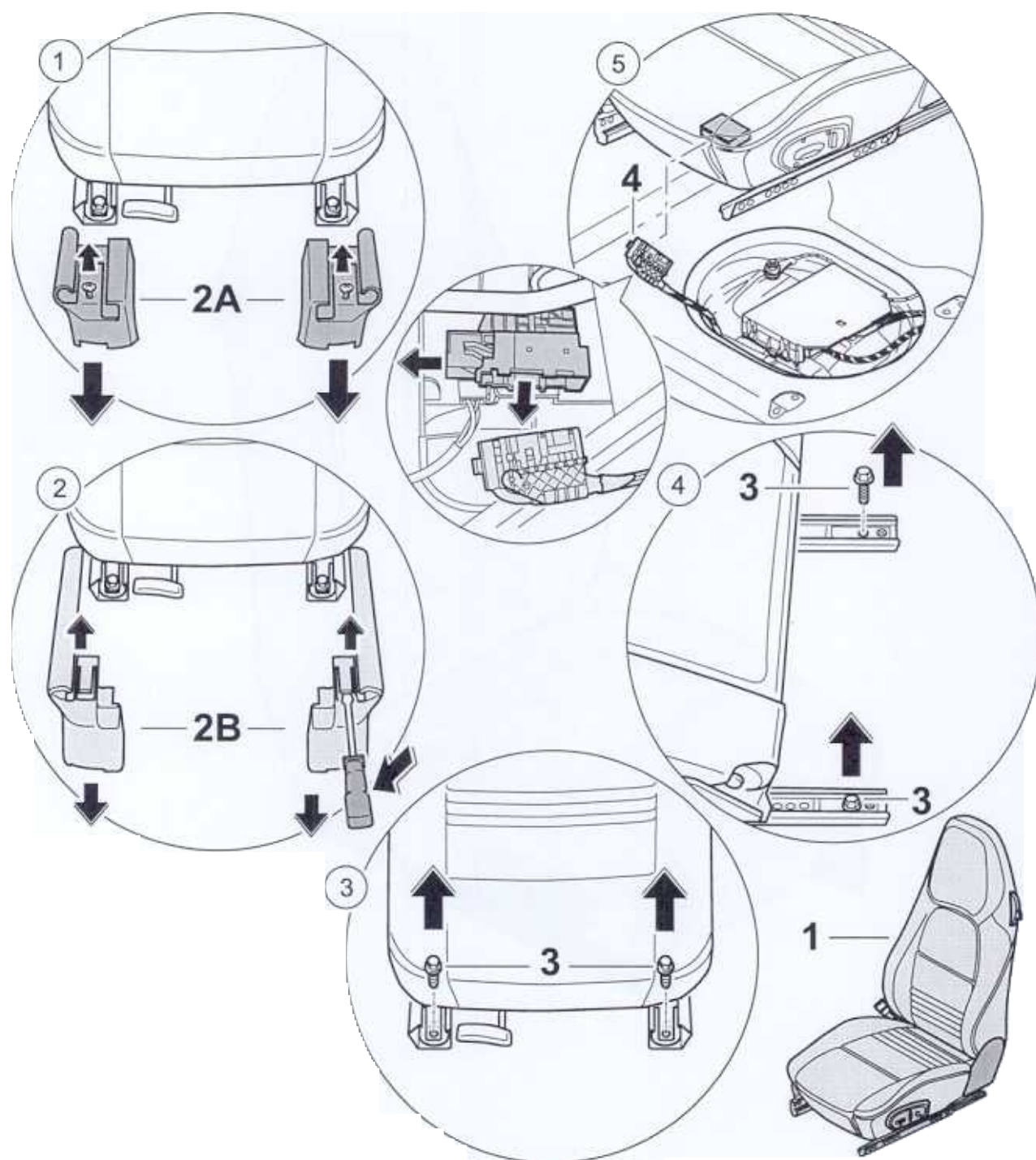
No.	Procedure	Instructions
1		Note Before installing the roof lining, perform a visual inspection of the rear plastic trim to ensure that the foam cover and self-adhesive fabric pieces are fully secured to the latching pin.
2	Fit frame	Insert the roof frame diagonally from the passenger compartment across the sliding roof aperture. At the same time, pull the front centre of the sliding roof aperture frame backwards, so that the frame overlaps less at the corners and can be inserted in the sliding roof aperture.
3	Detach metal strut	Pull the middle of the metal strut incorporated in the fabric pocket downwards so that it bends. Pull the metal strut out of the console on the left and right.
4	Clip in rear plastic trim	Attach the rear plastic trim to the roof frame evenly on the left and right.
5	Engage roof liner at sides	Engage metal strut of roof liner in the plastic clips on the left and right.
6	Clip in front plastic trim	Position front plastic trim left and right against the wind cowl frame, and clip in. Screw Torx screws M6 x 25 tight.
7	Install consoles and sun visors	Position the console against the wind cowl frame, screw in the cross-recess screw. Press the cover of the console in until it engages. For installation of sun visors, refer to: Serv. No. 68 23

No.	Procedure	Instructions
8	Remove interior light cover	Plug in the electrical plug connection of the sliding roof rocker switch and the interior light. Position the front of the cover against the windscrew, push backwards and clip in on the left and right (arrow B). Position cross-recess screws M5 (arrow A) and screw tight. Carefully clip both cover lenses into the openings provided.

Removing and installing front seat

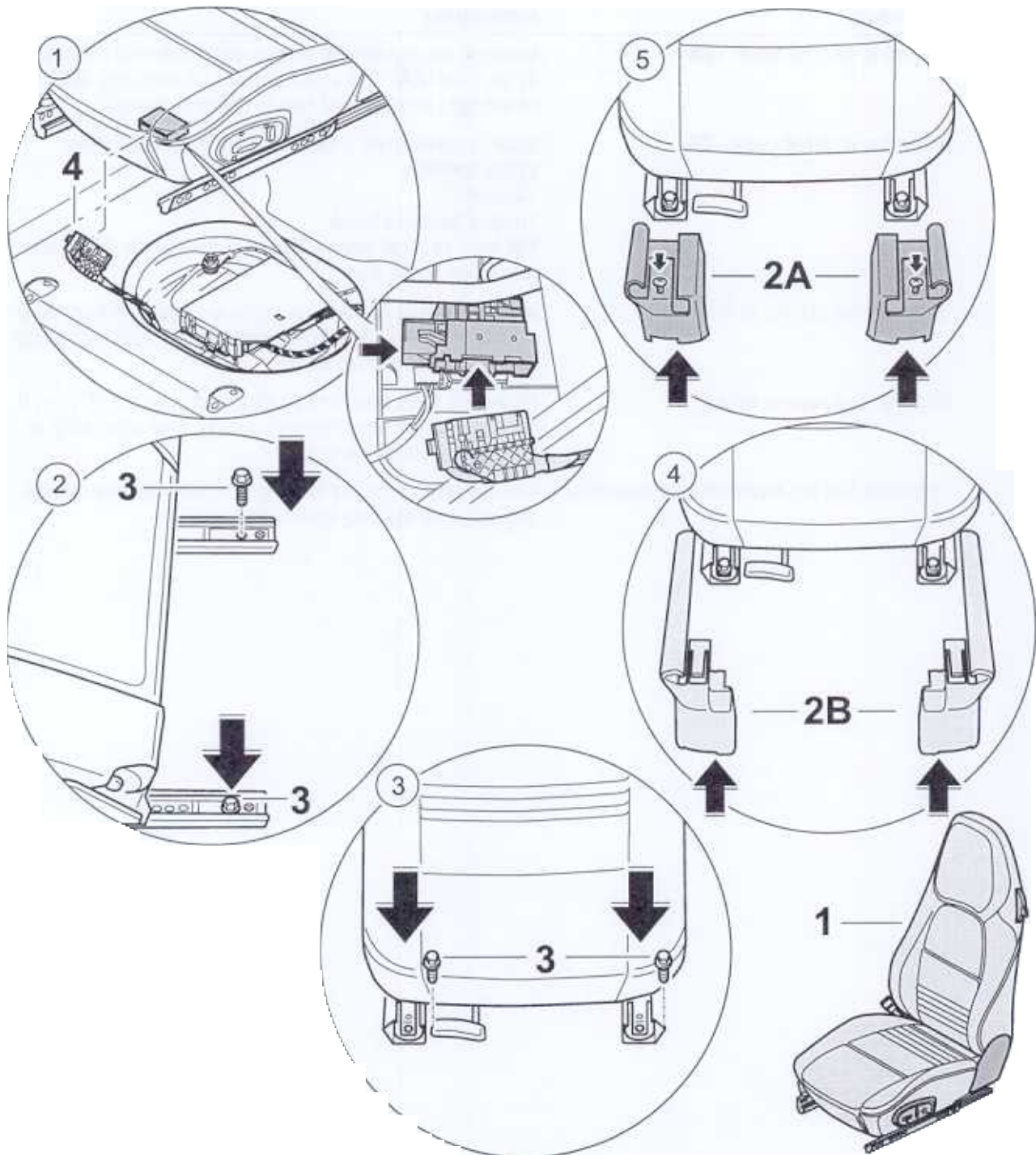


Removing front seat



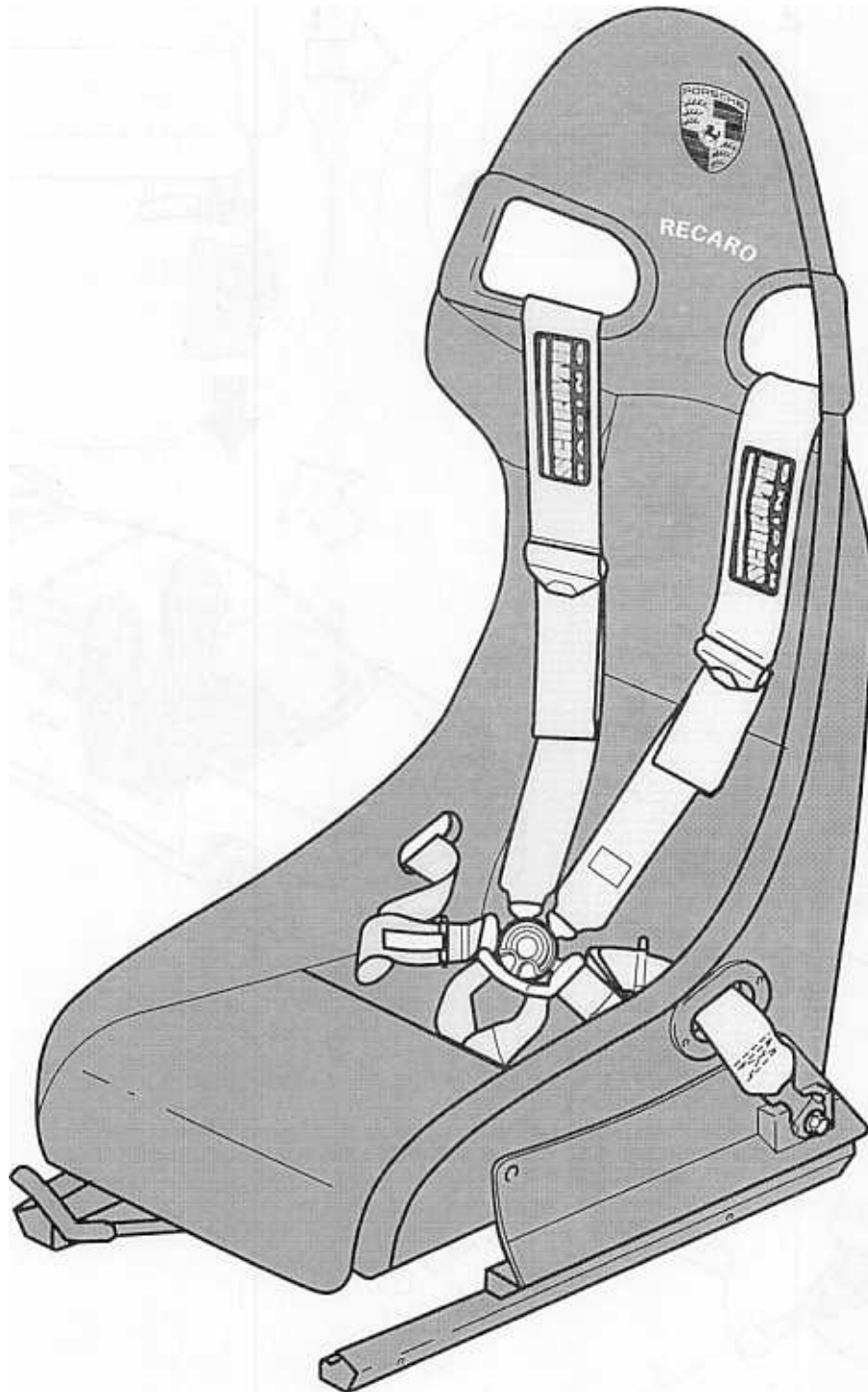
No.	Procedure	Instructions
	Removing seat rail cover -2A-	Unscrew the sheetmetal screws out of the seat rail cover at the front -2A- . Pull seat rail cover on front end -2A- out of the right and left seat rails in forward direction.
2	Removing seat rail cover -2B-	Insert a screwdriver under the locking tabs and press lightly upwards. Caution! Locking tabs can break. Pull front seat rail cover -2B- out of the right and left seat rails towards the front.
3	Undoing seat screws at front	Move seat to its rear limit position and undo the front M10 x 28 Torx screws -3- from the right and left seat rails using an E12 socket wrench insert.
4	Undoing seat screws at rear	Move seat to its front limit position and undo the M10 x 28 Torx screws -3- from the right and left seat rails using an E12 socket wrench insert.
5	Disconnecting the electrical plug connection	Release plug connector locking device on the side -arrow- and separate the plug connection --.

Installing front seat



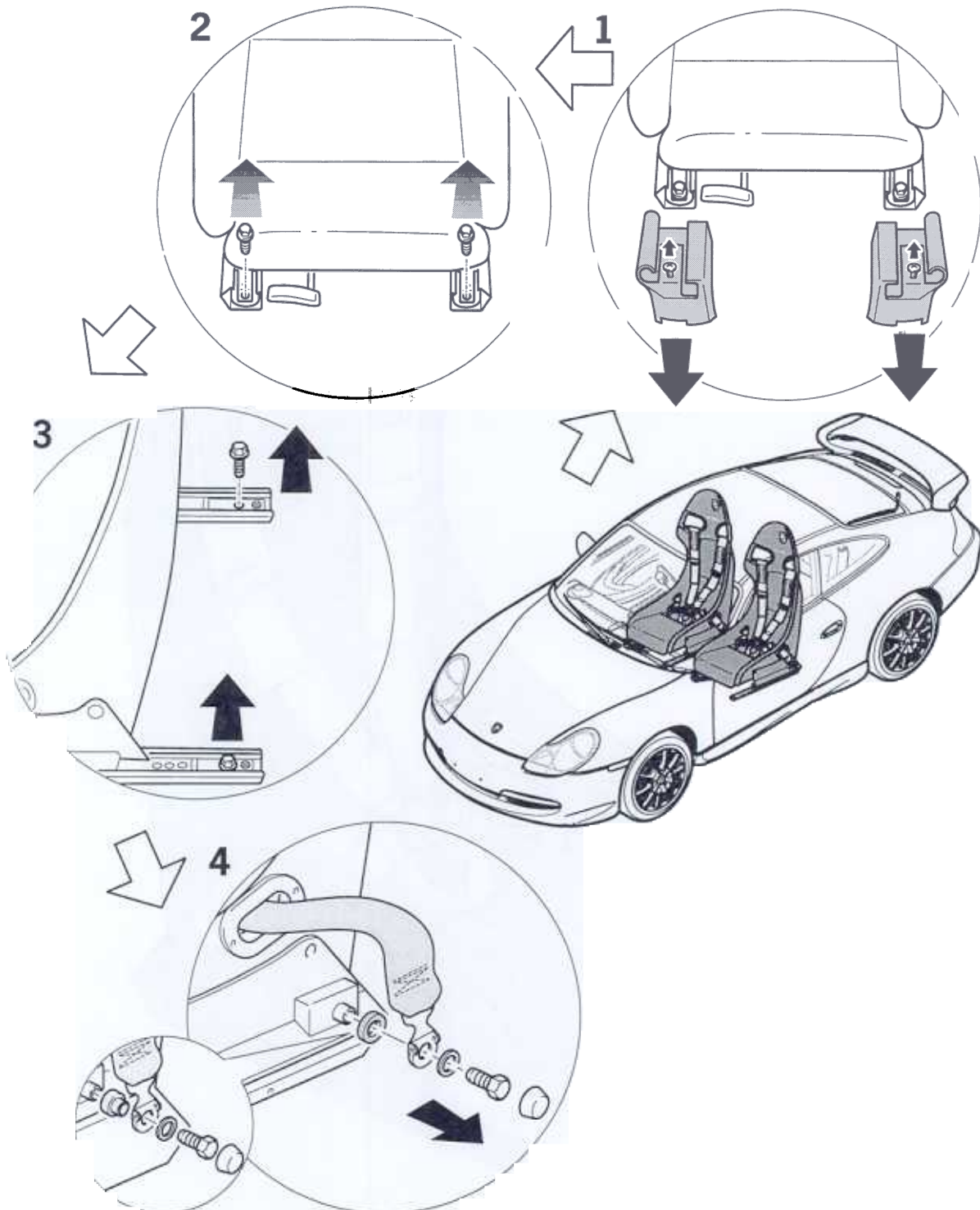
No.	Procedure	Instructions
	Connecting electrical plug connection	Join the plug connection -4- , press in plug connector locking device on the side -arrow- .
2	Fitting seat screws at rear	Position seat rails on the seat baseframe, screw the rear M10 x 28 Torx screws -3- into the seat baseframe on the left and right using the E12 socket wrench insert and tighten with tightening torque: -65 Nm- (48 ftlb.).
3	Fitting seat screws at front	Move seat to its rear limit position, screw the front M10 x 28 Torx screws -3- into the seat baseframe on the left and right using the E12 socket wrench insert and tighten with tightening torque: -65 Nm- (48 ftlb.).
4	Fitting seat rail cover -2B-	Push seat rail cover -2B- into front end of the left and right seat rails until the lug audibly engages.
5	Fitting seat rail cover -2A-	Push seat rail cover -2A- into front end of the left and right seat rails. Tighten the seat rail cover with the sheetmetal screws.

72 01 19 Removing and installing bucket seat – GT3



38_99

Removing GT3 bucket seat

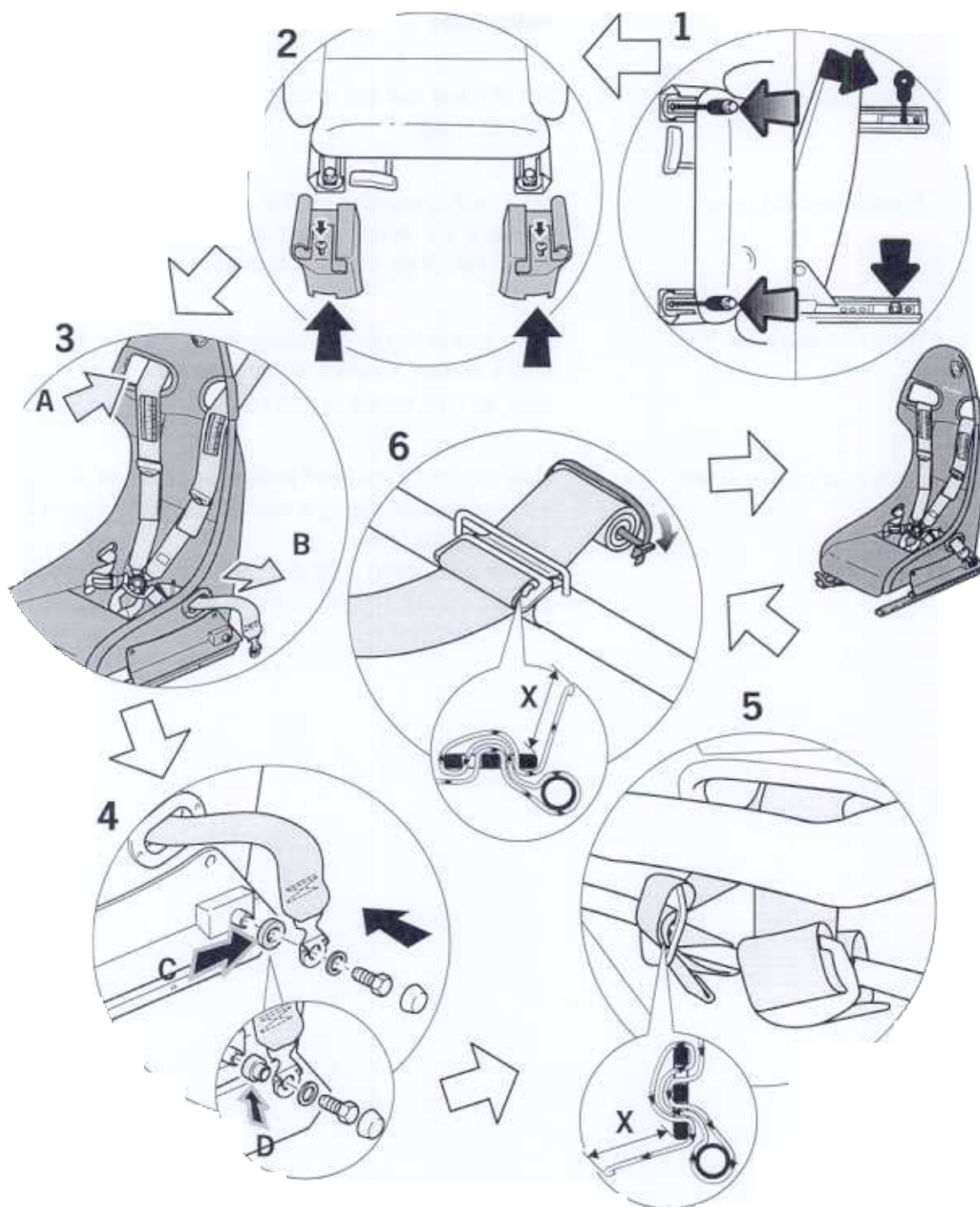


39_99

Removing GT3 bucket seat

No.	Procedure	Instructions
1	Detach belt fitting	Pull off cover cap and remove the hexagon head screw of the belt fitting.
2	Remove seat rail cover	Move seat to rear limit position. Unscrew the sheetmetal screws B 3.2 on the left and right out of the seat rail cover. Pull off the cover to the front.
3	Undo seat screws at front	Move seat to its rear limit position and undo the front M10 x 28 Torx screws from the right and left seat rails using an E 12 socket wrench insert.
4	Undo seat screws at rear	Move seat to its front limit position and undo the M10 x 28 Torx screws from the right and left seat rails using an E12 socket wrench insert. A foam part (inset) is fitted for the Club Sport version. A bushing is fitted for the Cup racing version.

Installing GT3 bucket seat



40_99

Installing GT3 bucket seat

No.	Procedure	Instructions
1	Fit seat screws at rear and front	Position seat rails on the seat baseframe, screw the rear M10 x 28 Torx screws into the seat baseframe on the left and right using the E 12 socket wrench insert. Move seat to its rear limit position, screw the front M10 x 28 Torx screws into the seat baseframe on the left and right using the E 12 socket wrench insert and tighten. Tightening torque 65 Nm (48 ftlb.)
2	Fit seat rail cover.	Push seat rail cover into front end of the left and right seat rails until the seat rail cover engages. Screw in the sheetmetal screw B 3.2.
3	Pull six-point seat belt through the openings in the seat	Pull six-point seat belt through the upper opening in the backrest from behind (arrow A) and through the opening in the seat frame from the side (arrow B). Note: The belt assembly procedure also applies for the standard belt.
4	Fit belt fitting	Position belt fitting on the seat frame and fasten. Attach covering cap. Use the foam part arrow C for the Club Sport version. Use the bushing arrow D for the Cup racing version. Tightening torque: 50 Nm (37 ftlb.)
5	Loop technique for fastening to the bucket seat cross member	The belt strap is looped around the transverse strut in the direction of the arrow (inset) and into the adjustable slider. The projection of the belt strap (dimension X) must be at least 100 mm.
6	Loop technique for fastening to the roll cage cross member	The belt strap is looped around the transverse strut in the direction of the arrow (inset) and into the adjustable slider. The projection of the belt strap (dimension X) must be at least 100 mm. Roll up the projecting belt strap and bind it with a tie wrap.