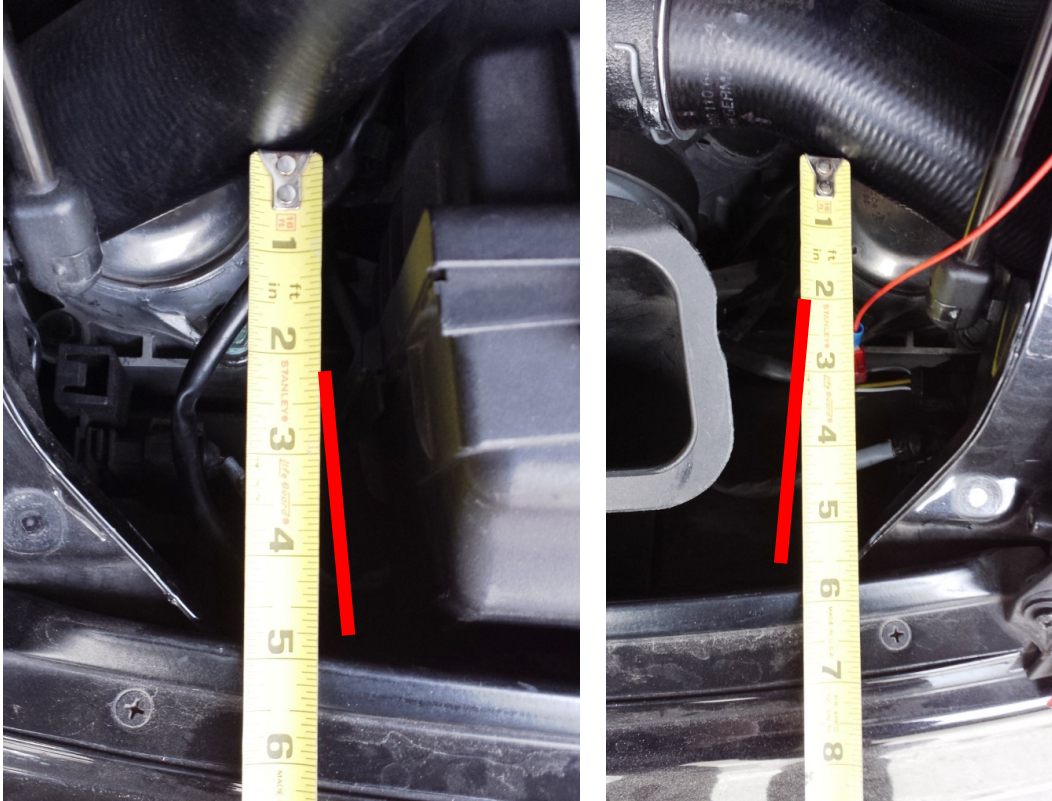




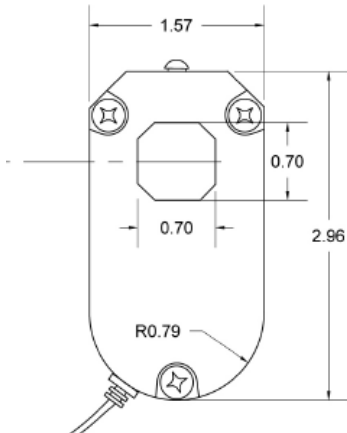
RENNKIT

996 Turbo Aftermarket Boost Hoses and Airbox Fitment

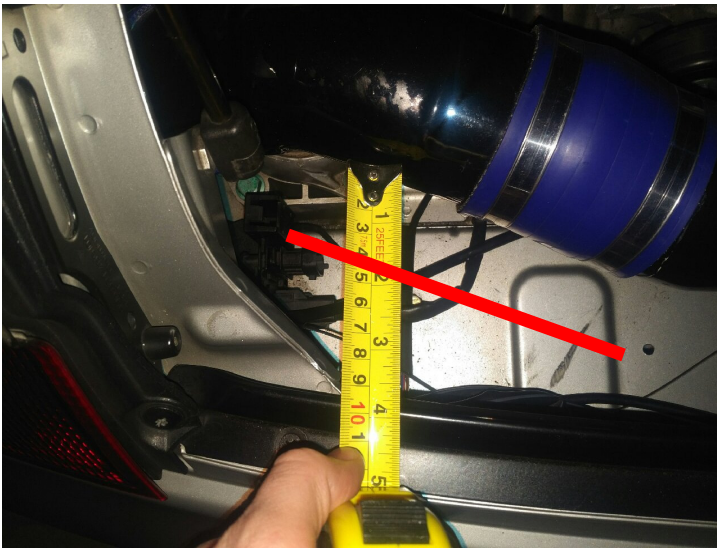
The 2001 – 2005 stock 996TT has “ram slots” that align front to rear with the stock airbox in place:



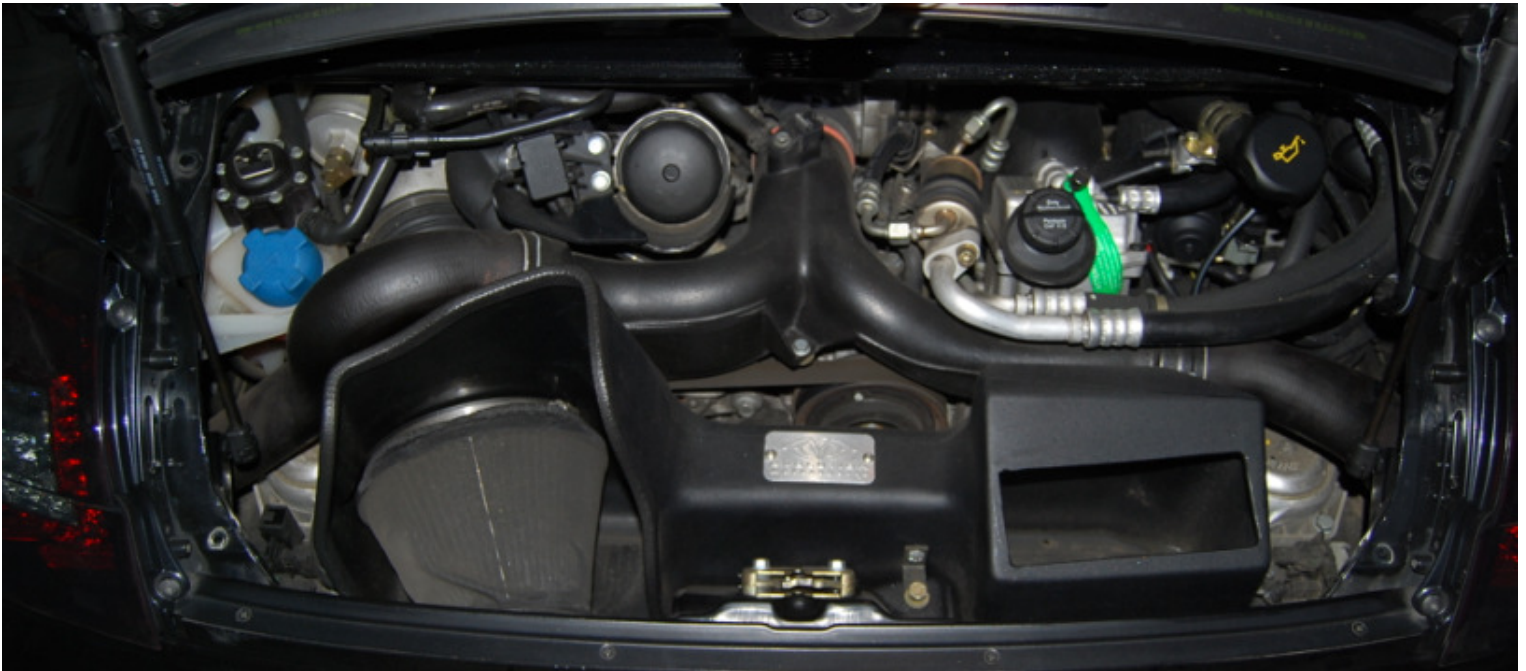
eRams have the following dimensions – check the clearance (3" x 1-5/8"):



996 Turbo with fat boost hoses and no airbox, a 10 – 4 and 2 - 8 o'clock position will work:



This shows the Evolution Motorsports airbox. The owner purchased a set of 4" eRams with Dust and Moisture boots:



The eRams had to be positioned (clocked) carefully to “just fit”:

